



Tool drives



Tool drives

■ Highlights from the PFERD range	3
■ General information	4
■ What the machine designations mean	6



Robot spindles for stationary applications

■ Straight grinder	8
■ Angle grinder with collet	11
■ Angle grinder with threaded spindle	11



Air grinders

■ Straight grinder	12
■ Angle grinder with collet	25
■ Angle grinder with threaded spindle	27
■ Belt grinders and belt arms	29
■ Filing machines	32
■ Marking pens	33
■ Fittings	34



Electric grinders

■ Micro motor system	36
■ Micro motor handpieces	36
■ Accessories for micro motor systems	37
■ Straight grinder	37
■ Angle grinder	38
■ EDGE FINISH system for work on edges	39
■ Burnishing machine	40
■ Belt grinders and belt arms	40
■ Pipe belt grinder	41



Drive systems with DIN 10/ DIN 15

■ Flexible shaft drives – EL motors for flexible shafts and accessories	44
■ Flexible shaft drives for Record Universal Motor and accessories	45
■ Flexible shaft drives for Mini-Mammoth Electronic and accessories	45
■ Flexible shaft drives for Mammoth Electronic and accessories	46
■ Flexible shaft drives for Maxi-Mammoth Electronic and accessories	48
■ Flexible shaft 4 and handpieces	49
■ Flexible shaft 6 and handpieces	50
■ Flexible shaft 6 Z and handpieces	50
■ Flexible shaft 7 and handpieces	51
■ Flexible shaft 10 and handpieces	52
■ Flexible shaft 12 and handpieces	53
■ Remote switch for flexible shafts and accessories	54
■ Special flexible shafts for inner grinding of pipes and accessories	55
■ Handpieces and accessories	56
■ Angle drives and accessories	57
■ Belt sanders	58
■ Handpieces for rigid extensions	59
■ Rigid extensions STV	60
■ Flexible shaft adapter	61
■ DL motors DIN 10 for rigid extensions	61
■ EL motors DIN 10 for rigid extensions	62



Accessories for tool drives

■ Extensions	63
■ Collets	64
■ Reducing collets and adapter	67
■ Arbor	67
■ Key	68
■ Maintenance accessories	69
■ Clamping flanges	69
■ Frequency damper	70

Robot spindle PGAS 4/52 RS

PFERD robot spindles are manufactured according to the most stringent quality criteria and the latest technological standards, and are ideal for stationary applications in robot cells and machine tools and for installation in transfer lines. Scan the QR code to find out more about PFERD's range of robot spindles.



Advantages:

- High torque due to planetary gear.
- Very high concentricity in continuous use.
- Double spindle bearing for a longer tool life.

Air grinder PGAS 3/380 E-HV

With the PGAS 3/380 E-HV, PFERD offers an air grinder with an elastically mounted spindle for low-vibration working. It also guarantees a longer tool life, especially when using tungsten carbide burs. Scan the QR code to find out more about PFERD's range of air grinders.



Advantages:

- The compact design enables good accessibility.
- Dead man's switch using safety lever valve.

Micro motor system MIM STG3S 3/800 with handpiece

The micro motor control device is suitable for stepless rotational speed regulation of handpieces (max. 80,000 RPM clockwise and max. 30,000 RPM anti-clockwise). The stepless rotational speed control can be provided by hand or via foot switch. The control device has 2 switchable connection sockets for micro motor handpieces. There are 4 rotational speed storage spaces available per connected handpiece. Scan the QR code to find out more about PFERD's range of micro motor systems.



Advantages:

- High power stability.

Air-power motor PMA 4/220 HV with DIN 10 for rigid extensions

The air grinder with DIN 10 connection can be used for all manner of applications with different rigid extensions. Scan the QR code to find out more about PFERD's range of air grinders with a DIN 10 connection.



Advantages:

- Very powerful with a compact shape.
- Safe working using dead man's switch.

The PFERD range includes tool drives for grinding, milling, brushing, cutting and polishing in manual applications as well as in robotic and semi-stationary applications. PFERD is one of only a few manufacturers that can offer a wide range of tools for work on surfaces and cutting of materials, as well as drives designed specifically for these tools, all from a single source.

The wide product range includes air and electric grinders as well as drive systems with DIN 10/ DIN 15 and thus offers the best solution for almost any working environment.

PFERD tool drives are characterized by their performance and durability. They are less prone to faults and comply with the latest technological standards.



Spare parts catalogue

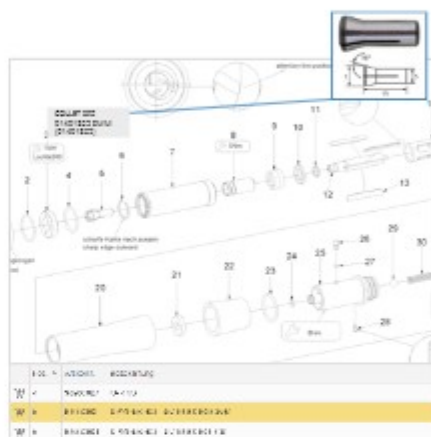
In our online spare parts catalogue, we have compiled all the information about every PFERD drive. Here you will find exploded drawings and other sketches as well as photos and ordering data for each individual spare part for our drives. With just a few clicks, you can select the required spare parts or spare parts kits, add them to your shopping cart and order them online directly from PFERD.

If you ever misplace the operating instructions, you can find them in our spare parts catalogue for download along with other documents such as CE declarations of conformity and illustrated DIY instructions for minor repairs.

Our clearly organized online spare parts catalogue can be found at spareparts.pferd.com.

In the information area you can see which documents are available for download.

Move your mouse over the different spare parts for your PFERD tool drive to see the exact product specifications. Clicking on the relevant code displays more information and a product image. In the lower section of the image, you have the option of adding the selected spare parts directly to the shopping cart and ordering them. Scan the QR code to access the online spare parts catalogue.



Explanation of pictograms used

General

	Rotational speed
	Belt speed
	Power output
	Matching open-ended wrenches
	Matching hexagon socket wrenches
	Matching face pin spanners
	Matching Allen keys
	Clamping range
	Collet

	Stud bolt
	Centre hole
	Guard
	Suitable for disc diameter
	Suitable for grinding drum fitting
	Belt dimensions
	Information on use – oil
	Can be used without oil
	Air pressure

	Air supply hose diameter
	Electric grinders and flexible shaft drives
	Voltage
	Frequency
	Protectively insulated in accordance with protection class II
	Protectively earthed in accordance with protection class I
	Safety transformer
	Safety extra-low voltage in accordance with protection class III
	Flexible shafts
	Drive-side shaft connection
	Handpiece-side sliding coupling

Criteria for selecting the optimum drive

An important prerequisite for cost-effective work is selecting the optimum tool. The appropriate drive is selected taking the following criteria into consideration:



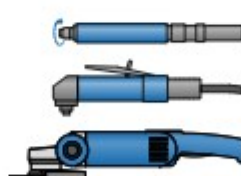
1. Rotational speed

The drive should always be selected according to the rotational speed and cutting speed recommendations for the tool. Refer to catalogue sections 2 to 8 and 10 for these recommendations.



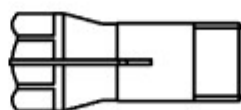
2. Power output

The drive's power output is the decisive factor for maintaining the rotational speed under load. The load is determined by the material to be machined, the cutting characteristics of the tool and the contact pressure.



3. Design, shape and size

Each type of application places specific demands on the design and size of the tool drive. The different designs can be used for various applications,



4. Tool mounting

Depending on the PFERD tool selected, different tool mountings are available, e.g. collets or threaded spindles. Matching collets are allocated to every drive. Please refer to the accessories for tool drives in this catalogue for an overview of collets and spindle extensions. If you have any further questions, your personal PFERD sales representative will be happy to help you.



Tool drives

What the machine designations mean



The PFERD machine designations are structured to provide information about the drive type, as well as designs, throttle types and tool mountings. They also enable you to quickly and easily select the right rotational speed and performance classes for the various machine types.

The following overview provides a concise summary:









Figure	Description				Performance group	Rotational speed	Designs, throttle types, tool mountings
Robot spindles							
	P Pneumatic	G Straight grinder	T Turbine motor	S Collet	1 x 100 watts	1000 x 100 RPM	RS Robot spindle
	P Pneumatic	G Straight grinder	A Rear exhaust	S Collet	3 x 100 watts	370 x 100 RPM	RS Robot spindle LL Anti-clockwise
	P Pneumatic	W Angle grinder	A Rear exhaust	S Collet	4 x 100 watts	180 x 100 RPM	RS Robot spindle
Air grinders							
	P Pneumatic	G Straight grinder	A Rear exhaust	S Collet	2 x 100 watts	800 x 100 RPM	E Elastic bearing Z Two-handed M Medium length V Extended DV Ring throttle HV Lever throttle DS Instant start
	P Pneumatic	W Angle grinder	A Rear exhaust	S Collet	1 x 100 watts	800 x 100 RPM	DV Ring throttle HV Lever throttle
	P Pneumatic	B Belt grinder	A Rear exhaust		2 x 100 watts	200 x 100 RPM	HV Lever throttle
	P Pneumatic	F Filing machine			4 Stroke length mm	84 x 100 strokes per minute	SV Push-pull throttle HV Lever throttle
	MST Marking pen				32 x 1000 strokes per minute		DV Ring throttle F Needle gauge: fine



Figure	Description				Performance group	Rotational speed	Designs, throttle types, tool mountings
Electric grinders							
	MIM Micro motor	STG Control device	3 Version	S with switch	3 x 100 watts	800 x 100 RPM	230 V Volts
	E Electric	G Straight grinder	ER Electronically regulated		8 x 100 watts	280 x 100 RPM	
	E Electric	B Belt grinder	ER Electronically regulated		8 x 100 watts	280 x 100 RPM	
	E Electric	B Belt grinder	ER Electronically regulated		12 x 100 watts	25 x 100 RPM	R Pipe belt grinder
	E Electric	W Angle grinder	ER Electronically regulated		17 x 100 watts	75 x 100 RPM	
	E Electric	S Burnishing machine	ER Electronically regulated		12 x 100 watts	25 x 100 RPM	
DIN 10/DIN 15 drive systems							
	E Electric	M Motor	ER Electronically regulated		8 x 100 watts	280 x 100 RPM	BW Flexible shaft
	R Record	U Universal motor	ER Electronically regulated		8 x 100 watts	180 x 100 RPM	
	MME Mini-Mammoth electronic		W Alternating current		11 x 100 watts	120 x 100 RPM	
	ME Mammoth electronic		W Alternating current		18 x 100 watts	240 x 100 RPM	
	MME Maxi-Mammoth electronic				40 x 100 watts	150 x 100 RPM	
	P Pneumatic	M Motor	A Rear exhaust		10 x 100 watts	120 x 100 RPM	HV Lever throttle
	E Electric	M Motor	ER Electronically regulated		8 x 100 watts	280 x 100 RPM	

Robot spindles for stationary applications

General information



Custom-made products

If you cannot find the solution for your particular application in our comprehensive product range, we are happy to produce robot spindles to meet your preferences and requirements. Our sales representatives and technical advisers will be happy to assist you in analyzing your task. Simply contact us to arrange an appointment. You can find our worldwide sales office addresses at www.pferd.com.

On request, robot spindles can be supplied with deflection, in a reversible design, with clockwise or anti-clockwise rotation and with a tool change system.

Straight grinder



PGTS 1/1000 RS

Robot spindle manufactured according to the most stringent quality criteria and the latest technological standards with clockwise rotation and exhaust directed to the front. Suitable for stationary applications in robot cells and machine tools and for installation in transfer lines.

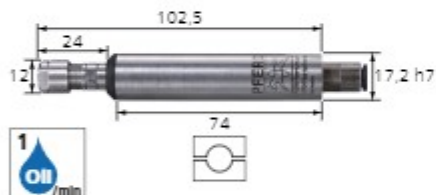
Contents:

Quick coupling (BK 4 mm - 1/4"), 3 mm collet (collet group 15), 2 keys (DM SW 6/8 mm).

Special features:

- Stainless steel collet mounting.
- Very high concentricity in continuous use.

RPM	Power output [watts]	Air consumption at idle [m³/min]	Air consumption under load [m³/min]	Inner dia./outer dia. of air supply hose [mm]	Net weight [kg]	Item no.	Designation	Price/unit GBP
100,000	100	0.32	0.32	2.7 / 4	0.296	80115012	PGTS 1/1000 RS	-



PGAS 2/800 RS

Robot spindle manufactured according to the most stringent quality criteria and the latest technological standards with clockwise rotation and exhaust directed to the rear. Suitable for stationary applications in robot cells and machine tools and for installation in transfer lines.

Contents:

Quick coupling (BK 6 mm - 1/4"), 3 mm collet (collet group 23), 2 keys (1x EM SW 9 mm, 1x EM SW 10 mm).

Special features:

- High rotational speeds in a compact design.
- Very high concentricity in continuous use.
- Double spindle bearing for a longer tool life.

RPM	Power output [watts]	Air consumption at idle [m³/min]	Air consumption under load [m³/min]	Inner dia./outer dia. of air supply hose [mm]	Net weight [kg]	Item no.	Designation	Price/unit GBP
80,000	110	0.2	0.18	4 / 6	0.110	80115010	PGAS 2/800 RS	-



PGAS 3/370 RS | PGAS 3/370 RS LL

Robot spindle manufactured according to the most stringent quality criteria and the latest technological standards with clockwise rotation (LL: anti-clockwise) and exhaust directed to the rear. For stationary applications in robot cells and machine tools, and for installation in transfer lines.

Contents:

Quick coupling (BK 8 mm - 1/4"), 6 mm collet (collet group 21), 2 keys (EM SW 14 mm).

Special features:

- Stainless steel collet mounting.
- Very high concentricity in continuous use.
- Double spindle bearing for a longer tool life.

RPM	Power output [watts]	Air consumption at idle [m³/min]	Air consumption under load [m³/min]	Inner dia./outer dia. of air supply hose [mm]	Net weight [kg]	Item no.	Designation	Price/unit GBP
37,000	320	0.7	0.5	6 / 8	0.456	80115011	PGAS 3/370 RS	-
		0.8	0.6	6 / 8	0.456	80115013	PGAS 3/370 RS LL	-



PGAS 4/280 RS

Robot spindle manufactured according to the most stringent quality criteria and the latest technological standards with clockwise rotation and exhaust directed to the rear. Suitable for stationary applications in robot cells and machine tools and for installation in transfer lines.

Contents:

Quick coupling (BK 12 mm - 1/4"),
6 mm collet (collet group 16), 2 keys
(1x EM SW 17 mm, 1x DM SW 20/22 mm).

Special features:

- Stainless steel collet mounting.
- Very high concentricity in continuous use.
- Double spindle bearing for a longer tool life.

RPM	Power output [watts]	Air consumption at idle [m³/min]	Air consumption under load [m³/min]	Inner dia./outer dia. of air supply hose [mm]	Net weight [kg]	Item no.	Designation	Price/unit GBP
28,000	380	0.89	0.69	10 / 12	0.750	80115014	PGAS 4/280 RS	-



PGAS 4/220 RS

Robot spindle manufactured according to the most stringent quality criteria and the latest technological standards with clockwise rotation and exhaust directed to the rear. Suitable for stationary applications in robot cells and machine tools and for installation in transfer lines.

Contents:

Quick coupling (BK 12 mm - 1/4"),
6 mm collet (collet group 16), 2 keys
(1x EM SW 17 mm, 1x DM SW 20/22 mm).

Special features:

- Stainless steel collet mounting.
- Very high concentricity in continuous use.
- Double spindle bearing for a longer tool life.

RPM	Power output [watts]	Air consumption at idle [m³/min]	Air consumption under load [m³/min]	Inner dia./outer dia. of air supply hose [mm]	Net weight [kg]	Item no.	Designation	Price/unit GBP
22,000	400	0.71	0.51	10 / 12	0.974	80106002	PGAS 4/220 RS	-



PGAS 8/170 RS

Robot spindle manufactured according to the most stringent quality criteria and the latest technological standards with clockwise rotation and exhaust directed to the rear. Suitable for stationary applications in robot cells and machine tools and for installation in transfer lines.

Contents:

Quick coupling (BK 12 mm - 1/4"),
6 mm collet (collet group 16), 2 keys
(1x EM SW 17 mm, 1x DM SW 20/22 mm).

Special features:

- Stainless steel collet mounting.
- Very high concentricity in continuous use.
- Double spindle bearing for a longer tool life.

RPM	Power output [watts]	Air consumption at idle [m³/min]	Air consumption under load [m³/min]	Inner dia./outer dia. of air supply hose [mm]	Net weight [kg]	Item no.	Designation	Price/unit GBP
17,000	800	1.15	0.95	10 / 12	1.668	80115015	PGAS 8/170 RS	-



PGAS 11/58 RS

Robot spindle manufactured according to the most stringent quality criteria and the latest technological standards with clockwise rotation and exhaust directed to the rear. Suitable for stationary applications in robot cells and machine tools and for installation in transfer lines.

Contents:

Quick coupling (BK 14 mm - 1/2"), speed
throttle, 6 mm collet (collet group 16), 2 keys
(1x EM SW 17 mm, 1x DM SW 20/22 mm).

Special features:

- High torque due to planetary gear.
- Very high concentricity in continuous use.
- With stainless steel collet mounting and double spindle bearing for a longer tool life.

RPM	Power output [watts]	Air consumption at idle [m³/min]	Air consumption under load [m³/min]	Inner dia./outer dia. of air supply hose [mm]	Exhaust hose internal dia. [mm]	Net weight [kg]	Item no.	Designation	Price/unit GBP
5,800	1,100	1.58	1.38	11 / 14	16	3.355	80115016	PGAS 11/58 RS	-



Robot spindles for stationary applications

Straight grinder



PGAS 4/52 RS

Robot spindle manufactured according to the most stringent quality criteria and the latest technological standards with clockwise rotation and exhaust directed to the rear. Suitable for stationary applications in robot cells and machine tools and for installation in transfer lines.

Contents:

Quick coupling (BK 10 mm - 1/4"), speed throttle, 6 mm collet (collet group 16), 2 keys (1x EM SW 17 mm, 1x DM SW 20/22 mm).

Special features:

- High torque due to planetary gear.
- Very high concentricity in continuous use.
- With stainless steel collet mounting and double spindle bearing for a longer tool life.

RPM	Power output [watts]	Air consumption at idle [m³/min]	Air consumption under load [m³/min]	Inner dia./outer dia. of air supply hose [mm]	Exhaust hose internal dia. [mm]	Net weight [kg]	Item no.	Designation	Price/unit GBP
5,200	380	0.71	0.51	8 / 10	12	1.140	80115017	PGAS 4/52 RS	-



PGAS 4/24 RS

Robot spindle manufactured according to the most stringent quality criteria and the latest technological standards with clockwise rotation and exhaust directed to the rear. Suitable for stationary applications in robot cells and machine tools and for installation in transfer lines.

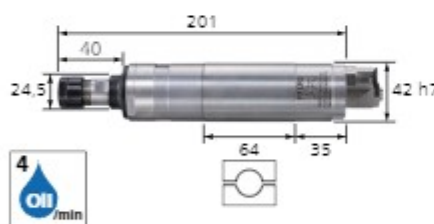
Contents:

Quick coupling (BK 10 mm - 1/4"), speed throttle, 6 mm collet (collet group 16), 2 keys (1x EM SW 17 mm, 1x DM SW 20/22 mm).

Special features:

- High torque due to planetary gear.
- Very high concentricity in continuous use.
- With stainless steel collet mounting and double spindle bearing for a longer tool life.

RPM	Power output [watts]	Air consumption at idle [m³/min]	Air consumption under load [m³/min]	Inner dia./outer dia. of air supply hose [mm]	Exhaust hose internal dia. [mm]	Net weight [kg]	Item no.	Designation	Price/unit GBP
2,400	380	0.71	0.51	8 / 10	12	1.140	80115018	PGAS 4/24 RS	-



PGAS 4/12 RS

Robot spindle manufactured according to the most stringent quality criteria and the latest technological standards with clockwise rotation and exhaust directed to the rear. Suitable for stationary applications in robot cells and machine tools and for installation in transfer lines.

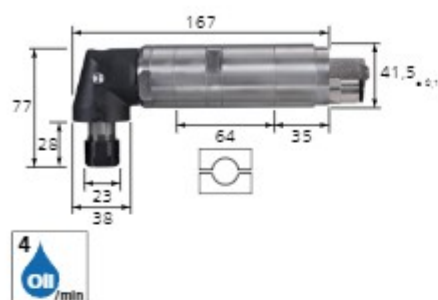
Contents:

Quick coupling (BK 10 mm - 1/4"), speed throttle, 6 mm collet (collet group 16), 2 keys (1x EM SW 17 mm, 1x DM SW 20/22 mm).

Special features:

- High torque due to planetary gear.
- Very high concentricity in continuous use.
- With stainless steel collet mounting and double spindle bearing for a longer tool life.

RPM	Power output [watts]	Air consumption at idle [m³/min]	Air consumption under load [m³/min]	Inner dia./outer dia. of air supply hose [mm]	Exhaust hose internal dia. [mm]	Net weight [kg]	Item no.	Designation	Price/unit GBP
1,200	380	0.71	0.51	8 / 10	12	1.415	80115019	PGAS 4/12 RS	-



PWAS 4/180 RS

Robot spindle manufactured according to the most stringent quality criteria and the latest technological standards with clockwise rotation and exhaust directed to the rear. Suitable for stationary applications in robot cells and machine tools and for installation in transfer lines.

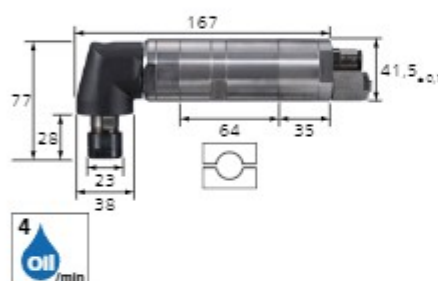
Contents:

Quick coupling (BK 10 mm - 1/4"), speed throttle, 6 mm collet (collet group 16), 2 keys (1x EM SW 17 mm, 1x DM SW 20/22 mm).

Special features:

- Very high concentricity in continuous use.

RPM	Power output [watts]	Air consumption at idle [m³/min]	Air consumption under load [m³/min]	Inner dia./outer dia. of air supply hose [mm]	Exhaust hose internal dia. [mm]	Net weight [kg]	Item no.	Designation	Price/unit GBP
18,000	380	0.71	0.51	8 / 10	12	1.410	80115021	PWAS 4/180 RS	-



PWAS 4/52 RS

Robot spindle manufactured according to the most stringent quality criteria and the latest technological standards with clockwise rotation and exhaust directed to the rear. Suitable for stationary applications in robot cells and machine tools and for installation in transfer lines.

Contents:

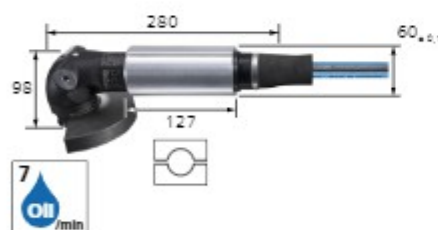
Quick coupling (BK 10 mm - 1/4"), speed throttle, 6 mm collet (collet group 16), 2 keys (1x EM SW 17 mm, 1x DM SW 20/22 mm).

Special features:

- Very high concentricity in continuous use.

RPM	Power output [watts]	Air consumption at idle [m³/min]	Air consumption under load [m³/min]	Inner dia./outer dia. of air supply hose [mm]	Exhaust hose internal dia. [mm]	Net weight [kg]	Item no.	Designation	Price/unit GBP
5,200	380	0.71	0.51	8 / 10	12	1.410	80115022	PWAS 4/52 RS	-

Angle grinder with threaded spindle



PWA 11/120 RS

Robot spindle manufactured according to the most stringent quality criteria and the latest technological standards with clockwise rotation and exhaust directed to the rear. Suitable for stationary applications in robot cells and machine tools and for installation in transfer lines.



Contents:

1 m exhaust hose and 2.5 m air supply hose with 1/2" male threaded connection, 1 clamping nut, 2 flange screws, 2 spacer sleeves, 2 keys (1x STL SW 35 x 5 mm, 1x SKS SW 4 mm), guard.

Special features:

- With maximum tool diameter up to 125 mm.
- Autobalancer on the drive spindle and constant power delivery due to the centrifugal governor.
- Spindle lock pin for tool change with one key.

RPM	Power output [watts]	Air consumption at idle [m³/min]	Air consumption under load [m³/min]	Spindle thread	Air supply hose internal dia. [mm]	Tool mounting [mm]	Net weight [kg]	Item no.	Designation	Price/unit GBP
12,000	1,100	0.5	1	M14	13	22.23	2.430	80115023	PWA 11/120 RS	-



PGTS 1/1100 DV

Sophisticated air-powered straight grinder with turbine motor, exhaust directed to the front and ring throttle version. Offers maximum cutting speed for TC burrs and mounted points.

Contents:

1.5 m air supply hose with 1/4" male threaded connection and threaded quick cou-

pling (STGI), 3 mm collet (collet group 15), 2 keys (DM SW 6/8 mm).

Special features:

- No oil residues on the workpiece.

RPM	Power output [watts]	Air consumption at idle [m³/min]	Air consumption under load [m³/min]	Air supply hose internal dia. [mm]	Dimensions L x W x H [mm]	Net weight [kg]	Item no.	Designation	Price/unit GBP
110,000	75	0.32	0.15	6	140 x 30 x 30	0.188	80107320	PGTS 1/1100 DV	-



PGAS 2/800 E-DV | PGAS 2/800 E-HV

Sophisticated air-powered straight grinder with elastically mounted spindle, exhaust directed to the rear, ring throttle version (HV: lever). HV type has dead man's switch using safety lever valve. Minimizes vibrations when working.

Contents:

0.75 m exhaust hose and 1.5 m air supply hose with 1/4" male threaded connection and threaded quick coupling (STGI), 3 mm collet (collet group 15), 2 keys (DM SW 6/8 mm).

- The removable spindle sleeve enables narrower and harder-to-reach areas to be accessed more easily.
- Easy guidance thanks to slim, lightweight design.

Special features:

- Offers high cutting speed for TC burrs and mounted points.

RPM	Power output [watts]	Air consumption at idle [m³/min]	Air consumption under load [m³/min]	Air supply hose internal dia. [mm]	Dimensions L x W x H [mm]	Net weight [kg]	Item no.	Designation	Price/unit GBP
80,000	110	0.27	0.26	4.8	145 x 23 x 23	0.136	80105021	PGAS 2/800 E-DV	-
						0.170	80105022	PGAS 2/800 E-HV	-



PGAS 1/750

Sophisticated air-powered straight grinder with exhaust directed to the rear and ring throttle version. Offers high cutting speed for TC burrs and mounted points.

Contents:

0.6 m exhaust hose and 2 m air supply hose with 1/4" male threaded connection and threaded quick coupling (STGI), 3 mm collet (collet group 1), 2 keys (EM SW 7 mm).

Special features:

- Easy guidance thanks to slim, lightweight design.
- The removable spindle sleeve enables narrower and harder-to-reach areas to be accessed more easily.

RPM	Power output [watts]	Air consumption at idle [m³/min]	Air consumption under load [m³/min]	Air supply hose internal dia. [mm]	Dimensions L x W x H [mm]	Net weight [kg]	Item no.	Designation	Price/unit GBP
75,000	110	0.35	0.2	5	159 x 20 x 20	0.142	80700026	PGAS 1/750	-





PGAS 1/700 | PGAS 1/700 HV

Sophisticated air-powered straight grinder with exhaust directed to the rear and ring throttle version. Offers high cutting speed for TC burrs and mounted points. HV: with dead man's switch using safety lever valve.



Contents:

0.75 m exhaust hose and 2 m air supply hose with 1/4" male threaded connection and threaded quick coupling (STGI), 3 mm collet (collet group 15), 2 keys (DM SW 6/8 mm).

Special features:

- Light and easy to handle.
- Easy guidance thanks to slim, lightweight design.

RPM	Power output [watts]	Air consumption at idle [m³/min]	Air consumption under load [m³/min]	Air supply hose internal dia. [mm]	Dimensions L x W x H [mm]	Net weight [kg]	Item no.	Designation	Price/unit GBP
70,000	100	0.25	0.12	4.8	145 x 21 x 21	0.090	80105090	PGAS 1/700	-
						0.128	80105095	PGAS 1/700 HV	-



PGAS 1/600

Sophisticated air-powered straight grinder with exhaust directed to the rear and ring throttle version. Offers high cutting speed for TC burrs and mounted points.

Contents:

0.6 m exhaust hose and 2 m air supply hose with 1/4" male threaded connection and threaded quick coupling (STGI), 3 mm collet (collet group 1), 2 keys (EM SW 7 mm).

Special features:

- Easy guidance thanks to slim, lightweight design.
- The removable spindle sleeve enables narrower and harder-to-reach areas to be accessed more easily.

RPM	Power output [watts]	Air consumption at idle [m³/min]	Air consumption under load [m³/min]	Air supply hose internal dia. [mm]	Dimensions L x W x H [mm]	Net weight [kg]	Item no.	Designation	Price/unit GBP
60,000	110	0.28	0.2	5	159 x 20 x 20	0.142	80700025	PGAS 1/600	-



PGAS 2/600 E-DV | PGAS 2/600 E-HV

Sophisticated air-powered straight grinder with elastically mounted spindle, exhaust directed to the rear and ring throttle version. High cutting speed for TC burrs and mounted points. HV: with dead man's switch using safety lever valve.

Contents:

0.75 m exhaust hose and 1.5 m air supply hose with 1/4" male threaded connection and threaded quick coupling (STGI), 3 mm collet (collet group 15), 2 keys (DM SW 6/8 mm).

- The removable spindle sleeve enables narrower and harder-to-reach areas to be accessed more easily.
- Easy guidance thanks to slim, lightweight design.

Special features:

- Light and easy to handle and enables low vibrations when working.

RPM	Power output [watts]	Air consumption at idle [m³/min]	Air consumption under load [m³/min]	Air supply hose internal dia. [mm]	Dimensions L x W x H [mm]	Net weight [kg]	Item no.	Designation	Price/unit GBP
60,000	100	0.26	0.24	4.8	145 x 23 x 23	0.137	80105096	PGAS 2/600 E-DV	-
						0.171	80105097	PGAS 2/600 E-HV	-

Air grinders

Straight grinder



PGAS 1/550

Sophisticated air-powered straight grinder with exhaust directed to the rear and ring throttle version. Offers high cutting speed for TC burrs and mounted points.



Contents:

0.75 m exhaust hose and 2 m air supply hose with 1/4" male threaded connection and threaded quick coupling (STGI), 3 mm collet (collet group 15), 2 keys (DM SW 6/8 mm).

Special features:

- Easy guidance thanks to slim, lightweight design.

RPM	Power output [watts]	Air consumption at idle [m³/min]	Air consumption under load [m³/min]	Air supply hose internal dia. [mm]	Dimensions L x W x H [mm]	Net weight [kg]	Item no.	Designation	Price/unit GBP
55,000	100	0.25	0.12	4.8	153 x 21 x 21	0.091	80105100	PGAS 1/550	-



PG 3/500 S | PGAS 3/500 HV

Sophisticated air-powered straight grinder with exhaust directed to the front (version PGAS: to the rear). HV: with dead man's switch using safety lever valve. S: with push-pull throttle version suitable for continuous use.

Contents:

PG 3/500 S: 3 m air supply hose with 1/4" male threaded connection and threaded quick coupling (STGI), 6 mm collet (collet group 5), 2 keys (1x EM SW 7/16", 1x EM SW 9/16").

PGAS 3/500 HV including 1 m exhaust hose.

Special features:

- Light and easy to handle.

RPM	Power output [watts]	Air consumption at idle [m³/min]	Air consumption under load [m³/min]	Air supply hose internal dia. [mm]	Dimensions L x W x H [mm]	Net weight [kg]	Item no.	Designation	Price/unit GBP
50,000	200	0.45	0.24	8.5	162 x 32 x 32	0.370	80107050	PG 3/500 S	-
					157 x 32 x 32	0.460	80107055	PGAS 3/500 HV	-



PGAS 3/380 E-DV | PGAS 3/380 E-HV

Sophisticated air-powered straight grinder with exhaust directed to the rear. DV: with ring throttle version, HV: with dead man's switch using safety lever valve.

Contents:

1 m exhaust hose and 2.5 m air supply hose with 1/4" male threaded connection and threaded quick coupling (STGI), 6 mm collet (collet group 6), 2 keys (1x EM SW 11 mm, 1x EM SW 14 mm).

Special features:

- Elastically mounted spindle guarantees a longer tool life, especially when using TC burrs.
- Low vibrations when working.
- The compact design enables good accessibility.

RPM	Power output [watts]	Air consumption at idle [m³/min]	Air consumption under load [m³/min]	Air supply hose internal dia. [mm]	Dimensions L x W x H [mm]	Net weight [kg]	Item no.	Designation	Price/unit GBP
38,000	290	0.7	0.6	8	220 x 39 x 39	0.472	80105153	PGAS 3/380 E-DV	-
						0.512	80105151	PGAS 3/380 E-HV	-



PGAS 3/350 DV | PGAS 3/350 HV

Sophisticated air-powered straight grinder with exhaust directed to the rear. DV: with ring throttle version, HV: with dead man's switch using safety lever valve.

Contents:

1 m exhaust hose and 2.5 m air supply hose with 1/4" male threaded connection and threaded quick coupling (STGI), 6 mm collet (collet group 6), 2 keys (1x EM SW 11 mm, 1x EM SW 14 mm).

Special features:

- Very easy to handle and guide thanks to the slim, lightweight design.
- High power output with compact design.



RPM	Power output [watts]	Air consumption at idle [m³/min]	Air consumption under load [m³/min]	Air supply hose internal dia. [mm]	Dimensions L x W x H [mm]	Net weight [kg]	Item no.	Designation	Price/unit GBP
35,000	290	0.6	0.5	6	220 x 30 x 30	0.401	80105152	PGAS 3/350 DV	-
						0.441	80105053	PGAS 3/350 HV	-



PGAS 3/350 V-DV | PGAS 3/350 V-HV

Sophisticated air-powered straight grinder with exhaust directed to the rear. DV: with ring throttle version, HV: with dead man's switch using safety lever valve.

Contents:

1 m exhaust hose and 2.5 m air supply hose with 1/4" male threaded connection and threaded quick coupling (STGI), 6 mm collet (collet group 6), 2 keys (1x EM SW 11 mm, 1x EM SW 14 mm).

Special features:

- Very easy to handle and guide.
- Extended design, ideal for working in hard-to-reach areas.
- High power output with compact design.



RPM	Power output [watts]	Air consumption at idle [m³/min]	Air consumption under load [m³/min]	Air supply hose internal dia. [mm]	Dimensions L x W x H [mm]	Net weight [kg]	Item no.	Designation	Price/unit GBP
35,000	290	0.6	0.5	6	335 x 30 x 30	0.740	80105160	PGAS 3/350 V-DV	-
						0.780	80105155	PGAS 3/350 V-HV	-



PGS 3/300 DV | PGS 3/300 HV

Sophisticated air-powered straight grinder with exhaust directed to the front. DV: with ring throttle version, HV: with dead man's switch using safety lever valve.

Contents:

2.5 m air supply hose with 1/4" male threaded connection and threaded quick coupling (STGI), 6 mm collet (collet group 10), 2 keys (1x EM SW 9 mm, 1x EM SW 10 mm).

Special features:

- Easy to handle and guide.



RPM	Power output [watts]	Air consumption at idle [m³/min]	Air consumption under load [m³/min]	Air supply hose internal dia. [mm]	Dimensions L x W x H [mm]	Net weight [kg]	Item no.	Designation	Price/unit GBP
30,000	240	0.6	0.5	8	160 x 30 x 30	0.348	80106028	PGS 3/300 DV	-
						0.384	80106029	PGS 3/300 HV	-





PGS 3/300 Z-DV | PGS 3/300 Z-HV

Sophisticated air-powered straight grinder with exhaust directed to the front. DV: with ring throttle version, HV: with dead man's switch using safety lever valve.

Contents:

2.5 m air supply hose with 1/4" male threaded connection and threaded quick coupling (STGI), 6 mm collet (collet group 10), 2 keys (1x EM SW 9 mm, 1x EM SW 10 mm).

Special features:

- Precise guidance thanks to extended slim housing.

RPM	Power output [watts]	Air consumption at idle [m³/min]	Air consumption under load [m³/min]	Air supply hose internal dia. [mm]	Dimensions L x W x H [mm]	Net weight [kg]	Item no.	Designation	Price/unit GBP
30,000	290	0.6	0.5	8	197 x 30 x 30	0.433	80106023	PGS 3/300 Z-DV	-
						0.469	80106024	PGS 3/300 Z-HV	-



PGAS 4/300 HV

Sophisticated air-powered straight grinder with exhaust directed to the rear and dead man's switch using safety lever valve.

Contents:

1 m exhaust hose and 2.5 m air supply hose with 1/4" male threaded connection and threaded quick coupling (STGI), 6 mm collet

(collet group 20), 2 keys (1x EM SW 12 mm, 1x EM SW 17 mm).

Special features:

- Very powerful with a compact design.

RPM	Power output [watts]	Air consumption at idle [m³/min]	Air consumption under load [m³/min]	Air supply hose internal dia. [mm]	Dimensions L x W x H [mm]	Net weight [kg]	Item no.	Designation	Price/unit GBP
30,000	440	0.88	0.84	8	245 x 39 x 39	0.830	80106021	PGAS 4/300 HV	-



PGAS 4/300 M-HV

Sophisticated air-powered straight grinder with exhaust directed to the rear and dead man's switch using safety lever valve.

Contents:

1 m exhaust hose and 2.5 m air supply hose with 1/4" male threaded connection and threaded quick coupling (STGI), 6 mm collet

(collet group 6), 2 keys (1x EM SW 11 mm, 1x EM SW 14 mm).

Special features:

- Medium-length design for use when access is restricted.

RPM	Power output [watts]	Air consumption at idle [m³/min]	Air consumption under load [m³/min]	Air supply hose internal dia. [mm]	Dimensions L x W x H [mm]	Net weight [kg]	Item no.	Designation	Price/unit GBP
30,000	440	0.88	0.84	8	335 x 39 x 39	1.198	80106027	PGAS 4/300 M-HV	-



PGAS 4/300 V-HV

Sophisticated air-powered straight grinder with exhaust directed to the rear and dead man's switch using safety lever valve.

Contents:

1 m exhaust hose and 2.5 m air supply hose with 1/4" male threaded connection and threaded quick coupling (STGI), 6 mm collet

(collet group 6), 2 keys (1x EM SW 11 mm, 1x EM SW 14 mm).

Special features:

- Extended design, ideal for working in hard-to-reach areas.

RPM	Power output [watts]	Air consumption at idle [m³/min]	Air consumption under load [m³/min]	Air supply hose internal dia. [mm]	Dimensions L x W x H [mm]	Net weight [kg]	Item no.	Designation	Price/unit GBP
30,000	440	0.88	0.84	8	445 x 39 x 39	1.421	80106022	PGAS 4/300 V-HV	-



PG 3/250 S

Sophisticated air-powered straight grinder with exhaust directed to the front. Suitable for continuous use thanks to push-pull throttle version. Provides constant power delivery due to the centrifugal governor.

Contents:

3 m air supply hose with 1/4" male threaded connection and threaded quick coupling (STGI), 6 mm collet (collet group 5), 2 keys (1x EM SW 7/16", 1x EM SW 9/16").

Special features:

- Small design.
- Good accessibility thanks to compact design.
- Light and easy to handle.

RPM	Power output [watts]	Air consumption at idle [m³/min]	Air consumption under load [m³/min]	Air supply hose internal dia. [mm]	Dimensions L x W x H [mm]	Net weight [kg]	Item no.	Designation	Price/unit GBP
25,000	225	0.21	0.49	8.5	162 x 32 x 32	0.370	80107060	PG 3/250 S	-



PGAS 4/250 E-HV

Sophisticated air-powered straight grinder with exhaust directed to the rear and dead man's switch using safety lever valve. Can also be operated without oil; however, this will lead to a shorter service life and reduced rotational speed and power output.

Contents:

1 m exhaust hose and 2.5 m air supply hose with 1/4" male threaded connection and threaded quick coupling (STGI), 6 mm collet (collet group 16), 2 keys (1x EM SW 17 mm, 1x DM SW 20/22 mm).

Special features:

- The elastically mounted spindle enables vibration-low working.
- Particularly suitable for use with TC burrs.

RPM	Power output [watts]	Air consumption at idle [m³/min]	Air consumption under load [m³/min]	Air supply hose internal dia. [mm]	Dimensions L x W x H [mm]	Net weight [kg]	Item no.	Designation	Price/unit GBP
25,000	440	0.98	0.87	8	220 x 46 x 46	0.870	80107181	PGAS 4/250 E-HV	-



PGAS 4/250 HV

Sophisticated air-powered straight grinder with exhaust directed to the rear and dead man's switch using safety lever valve. Can also be operated without oil; however, this will lead to a shorter service life and reduced rotational speed and power output.

Contents:

1 m exhaust hose and 2.5 m air supply hose with 1/4" male threaded connection and threaded quick coupling (STGI), 6 mm collet

(collet group 20), 2 keys (1x EM SW 12 mm, 1x EM SW 17 mm).

Special features:

- Very powerful with a compact design.

RPM	Power output [watts]	Air consumption at idle [m³/min]	Air consumption under load [m³/min]	Air supply hose internal dia. [mm]	Dimensions L x W x H [mm]	Net weight [kg]	Item no.	Designation	Price/unit GBP
25,000	440	0.98	0.87	8	245 x 39 x 39	0.830	80106026	PGAS 4/250 HV	-





PGAS 4/250 M-HV

Sophisticated air-powered straight grinder with exhaust directed to the rear and dead man's switch using safety lever valve. Can also be operated without oil; however, this will lead to a shorter service life and reduced rotational speed and power output.

Contents:
1 m exhaust hose and 2.5 m air supply hose with 1/4" male threaded connection and threaded quick coupling (STGI), 6 mm collet

(collet group 6), 2 keys (1x EM SW 11 mm, 1x EM SW 14 mm).

Special features:

- Medium-length design for use when access is restricted.

RPM	Power output [watts]	Air consumption at idle [m³/min]	Air consumption under load [m³/min]	Air supply hose internal dia. [mm]	Dimensions L x W x H [mm]	Net weight [kg]	Item no.	Designation	Price/unit GBP
25,000	440	0.98	0.87	8	335 x 39 x 39	1.198	80106007	PGAS 4/250 M-HV	-



PGAS 4/250 V-HV

Sophisticated air-powered straight grinder with exhaust directed to the rear and dead man's switch using safety lever valve. Can also be operated without oil; however, this will lead to a shorter service life and reduced rotational speed and power output.

Contents:
1 m exhaust hose and 2.5 m air supply hose with 1/4" male threaded connection and threaded quick coupling (STGI), 6 mm collet

(collet group 6), 2 keys (1x EM SW 11 mm, 1x EM SW 14 mm).

Special features:

- Extended design, ideal for working in hard-to-reach areas.

RPM	Power output [watts]	Air consumption at idle [m³/min]	Air consumption under load [m³/min]	Air supply hose internal dia. [mm]	Dimensions L x W x H [mm]	Net weight [kg]	Item no.	Designation	Price/unit GBP
25,000	440	0.98	0.87	8	445 x 39 x 39	1.421	80106006	PGAS 4/250 V-HV	-



PGAS 4/220 Z-HV

Sophisticated air-powered straight grinder with exhaust directed to the rear and dead man's switch using safety lever valve. Can also be operated without oil; however, this will lead to a shorter service life and reduced rotational speed and power output.

Contents:
1 m exhaust hose and 2.5 m air supply hose with 1/4" male threaded connection and threaded quick coupling (STGI), 6 mm collet (collet group 20), 2 keys (1x EM SW 12 mm, 1x EM SW 17 mm).

Special features:

- Very powerful with a compact design.
- Can be guided precisely thanks to comfortable two-handed operation.

RPM	Power output [watts]	Air consumption at idle [m³/min]	Air consumption under load [m³/min]	Air supply hose internal dia. [mm]	Dimensions L x W x H [mm]	Net weight [kg]	Item no.	Designation	Price/unit GBP
22,000	400	0.98	0.87	8	320 x 39 x 39	1.221	80106005	PGAS 4/220 Z-HV	-





PG 8/220 HV | PGAS 8/220 HV

Sophisticated air-powered straight grinder with exhaust directed to the front (PGAS: to the rear) and with dead man's switch using safety lever valve.

Contents:

PG 8/220 HV: 3 m air supply hose with 1/4" male threaded connection and threaded quick coupling (STGI), 6 mm collet (collet group 7), 2 keys (1x EM SW 9/16", 1x EM SW 3/4").

PGAS 8/220 HV: including 1 m exhaust hose.

Special features:

- Compact design.

RPM	Power output [watts]	Air consumption at idle [m³/min]	Air consumption under load [m³/min]	Air supply hose internal dia. [mm]	Dimensions L x W x H [mm]	Net weight [kg]	Item no.	Designation	Price/unit GBP
22,000	600	0.95	0.85	8.5	184 x 46 x 46	0.950	80107081	PG 8/220 HV	-
					205 x 46 x 46	1.000	80107085	PGAS 8/220 HV	-



PG 8/220 V-HV | PGAS 8/220 VS-HV

Sophisticated air-powered straight grinder with exhaust directed to the front (VS-HV: to the rear) and with dead man's switch using safety lever valve.

Contents:

PG 8/220 V-HV: 3 m air supply hose with 1/4" male threaded connection and threaded quick coupling (STGI), 6 mm collet (collet group 7), 2 keys (1x EM SW 9/16", 1x EM SW 3/4").

PGAS 8/220 VS-HV: 1 m exhaust hose and 3 m air supply hose with 1/4" male threaded connection and threaded quick coupling (STGI), 6 mm collet (collet group 5), 2 keys (1x EM SW 7/16", 1x EM SW 9/16").

Special features:

- VS-HV type has exceptionally slim drive extension.

RPM	Power output [watts]	Air consumption at idle [m³/min]	Air consumption under load [m³/min]	Air supply hose internal dia. [mm]	Dimensions L x W x H [mm]	Net weight [kg]	Item no.	Designation	Price/unit GBP
22,000	600	0.95	0.85	8.5	310 x 46 x 46	1.400	80700012	PG 8/220 V-HV	-
					335 x 46 x 46	1.170	80706060	PGAS 8/220 VS-HV	-



PGAS 10/200 HV

Sophisticated air-powered straight grinder with exhaust directed to the rear and dead man's switch using safety lever valve.

Contents:

1 m exhaust hose and 2.5 m air supply hose with 1/2" male threaded connection, 6 mm collet (collet group 16), 2 keys (1x EM SW 17 mm, 1x DM SW 20/22 mm).

tion, 6 mm collet (collet group 16), 2 keys (1x EM SW 17 mm, 1x DM SW 20/22 mm).

Special features:

- Powerful drive for heavy-duty use.

RPM	Power output [watts]	Air consumption at idle [m³/min]	Air consumption under load [m³/min]	Air supply hose internal dia. [mm]	Dimensions L x W x H [mm]	Net weight [kg]	Item no.	Designation	Price/unit GBP
20,000	1,000	1.38	1.1	13	263 x 46 x 46	1.234	80101046	PGAS 10/200 HV	-





PGAS 10/200 V-HV

Sophisticated air-powered straight grinder with exhaust directed to the rear and dead man's switch using safety lever valve.

Contents:

1 m exhaust hose and 2.5 m air supply hose with 1/2" male threaded connection, 6 mm collet (collet group 16), 2 keys (1x EM SW 17 mm, 1x DM SW 20/22 mm).

Special features:

- Very long design, particularly well suited to working in hard-to-reach areas.

RPM	Power output [watts]	Air consumption at idle [m³/min]	Air consumption under load [m³/min]	Air supply hose internal dia. [mm]	Dimensions L x W x H [mm]	Net weight [kg]	Item no.	Designation	Price/unit GBP
20,000	1,000	1.38	1.1	13	503 x 46 x 46	2.047	80101045	PGAS 10/200 V-HV	-



PGAS 4/190 HV

Sophisticated air-powered straight grinder with exhaust directed to the rear and dead man's switch using safety lever valve. Can also be operated without oil; however, this will lead to a shorter service life and reduced rotational speed and power output.

Contents:

1 m exhaust hose and 2.5 m air supply hose with 1/4" male threaded connection and threaded quick coupling (STGI), 6 mm collet

(collet group 20), 2 keys (1x EM SW 12 mm, 1x EM SW 17 mm).

Special features:

- Very powerful with a compact design.

RPM	Power output [watts]	Air consumption at idle [m³/min]	Air consumption under load [m³/min]	Air supply hose internal dia. [mm]	Dimensions L x W x H [mm]	Net weight [kg]	Item no.	Designation	Price/unit GBP
19,000	370	0.78	0.72	8	245 x 39 x 39	0.830	80105180	PGAS 4/190 HV	-



PGAS 4/190 M-HV

Sophisticated air-powered straight grinder with exhaust directed to the rear and dead man's switch using safety lever valve. Can also be operated without oil; however, this will lead to a shorter service life and reduced rotational speed and power output.

Contents:

1 m exhaust hose and 2.5 m air supply hose with 1/4" male threaded connection and threaded quick coupling (STGI), 6 mm collet

(collet group 6), 2 keys (1x EM SW 11 mm, 1x EM SW 14 mm).

Special features:

- Medium-length design for use when access is restricted.

RPM	Power output [watts]	Air consumption at idle [m³/min]	Air consumption under load [m³/min]	Air supply hose internal dia. [mm]	Dimensions L x W x H [mm]	Net weight [kg]	Item no.	Designation	Price/unit GBP
19,000	370	0.78	0.72	8	335 x 39 x 39	1.198	80105171	PGAS 4/190 M-HV	-



PGAS 4/190 V-HV

Sophisticated air-powered straight grinder with exhaust directed to the rear and dead man's switch using safety lever valve. Can also be operated without oil; however, this will lead to a shorter service life and reduced rotational speed and power output.

Contents:
1 m exhaust hose and 2.5 m air supply hose with 1/4" male threaded connection and threaded quick coupling (STGI), 6 mm collet

(collet group 6), 2 keys (1x EM SW 11 mm, 1x EM SW 14 mm).

Special features:

- Extended design, ideal for working in hard-to-reach areas.

RPM	Power output [watts]	Air consumption at idle [m³/min]	Air consumption under load [m³/min]	Air supply hose internal dia. [mm]	Dimensions L x W x H [mm]	Net weight [kg]	Item no.	Designation	Price/unit GBP
19,000	370	0.78	0.72	8	445 x 39 x 39	1.421	80105170	PGAS 4/190 V-HV	-



PG 8/160 HV | PGAS 8/160 VM-HV

Sophisticated air-powered straight grinder with exhaust directed to the front (VM-HV: to the rear) and dead man's switch using safety lever valve. HV type has compact shape. VM-HV type has slim drive extension.

Contents:
PG 8/160 HV: 3 m air supply hose with 1/4" male threaded connection and threaded quick coupling (STGI), 6 mm collet (collet group 7), 2 keys (1x EM SW 9/16", 1x EM SW 3/4").

PGAS 8/160 VM-HV: including 1 m exhaust hose.

Special features:

- Constant power delivery due to the centrifugal governor.

RPM	Power output [watts]	Air consumption at idle [m³/min]	Air consumption under load [m³/min]	Air supply hose internal dia. [mm]	Dimensions L x W x H [mm]	Net weight [kg]	Item no.	Designation	Price/unit GBP
16,000	600	0.34	0.85	8.5	184 x 46 x 46	0.950	80107041	PG 8/160 HV	-
					338 x 46	1.200	80706075	PGAS 8/160 VM-HV	-



PGAS 10/160 HV

Sophisticated air-powered straight grinder with exhaust directed to the rear and dead man's switch using safety lever valve.

Contents:
1 m exhaust hose and 2.5 m air supply hose with 1/2" male threaded connection, 6 mm collet (collet group 16), 2 keys (1x EM SW 17 mm, 1x DM SW 20/22 mm).

Special features:

- Constant power delivery due to the centrifugal governor.
- Powerful drive for heavy-duty use.

RPM	Power output [watts]	Air consumption at idle [m³/min]	Air consumption under load [m³/min]	Air supply hose internal dia. [mm]	Dimensions L x W x H [mm]	Net weight [kg]	Item no.	Designation	Price/unit GBP
16,000	1,000	0.7	0.9	13	263 x 46 x 46	1.234	80101051	PGAS 10/160 HV	-





PGAS 10/160 V-HV

Sophisticated air-powered straight grinder with exhaust directed to the rear and dead man's switch using safety lever valve.

Contents:

1 m exhaust hose and 2.5 m air supply hose with 1/2" male threaded connection, 6 mm collet (collet group 16), 2 keys (1x EM SW 17 mm, 1x DM SW 20/22 mm).

Special features:

- Very long design, particularly well suited to working in hard-to-reach areas.
- Constant power delivery due to the centrifugal governor.

RPM	Power output [watts]	Air consumption at idle [m³/min]	Air consumption under load [m³/min]	Air supply hose internal dia. [mm]	Dimensions L x W x H [mm]	Net weight [kg]	Item no.	Designation	Price/unit GBP
16,000	1,000	0.7	0.9	13	503 x 46 x 46	2.047	80101050	PGAS 10/160 V-HV	-



PGAS 4/120 E-HV

Sophisticated air-powered straight grinder with exhaust directed to the rear and dead man's switch using safety lever valve. Can also be operated without oil; however, this will lead to a shorter service life and reduced rotational speed and power output.

Contents:

1 m exhaust hose and 2.5 m air supply hose with 1/4" male threaded connection and threaded quick coupling (STGI), 6 mm collet (collet group 16), 2 keys (1x EM SW 17 mm, 1x DM SW 20/22 mm).

Special features:

- The elastically mounted spindle enables vibration-low working.
- Constant power delivery due to the centrifugal governor.

RPM	Power output [watts]	Air consumption at idle [m³/min]	Air consumption under load [m³/min]	Air supply hose internal dia. [mm]	Dimensions L x W x H [mm]	Net weight [kg]	Item no.	Designation	Price/unit GBP
12,000	440	0.7	0.98	8	250 x 46 x 46	1.035	80107191	PGAS 4/120 E-HV	-



PGAS 10/120 HV

Sophisticated air-powered straight grinder with exhaust directed to the rear and dead man's switch using safety lever valve.

Contents:

1 m exhaust hose and 2.5 m air supply hose with 1/2" male threaded connection, 6 mm collet (collet group 16), 2 keys (1x EM SW 17 mm, 1x DM SW 20/22 mm).

Special features:

- Constant power delivery due to the centrifugal governor.

RPM	Power output [watts]	Air consumption at idle [m³/min]	Air consumption under load [m³/min]	Air supply hose internal dia. [mm]	Dimensions L x W x H [mm]	Net weight [kg]	Item no.	Designation	Price/unit GBP
12,000	950	0.5	0.9	13	263 x 46 x 46	1.234	80101061	PGAS 10/120 HV	-



PGAS 10/120 V-HV

Sophisticated air-powered straight grinder with exhaust directed to the rear and dead man's switch using safety lever valve.

Contents:

1 m exhaust hose and 2.5 m air supply hose with 1/2" male threaded connection, 6 mm collet (collet group 16), 2 keys (1x EM SW 17 mm, 1x DM SW 20/22 mm).

Special features:

- Very long design, particularly well suited to working in hard-to-reach areas.
- Constant power delivery due to the centrifugal governor.

RPM	Power output [watts]	Air consumption at idle [m³/min]	Air consumption under load [m³/min]	Air supply hose internal dia. [mm]	Dimensions L x W x H [mm]	Net weight [kg]	Item no.	Designation	Price/unit GBP
12,000	950	0.5	0.9	13	503 x 46 x 46	2.047	80101060	PGAS 10/120 V-HV	-



PG 8/100 HV | PGAS 8/100 HV

Sophisticated air-powered straight grinder with exhaust directed to the front (PGAS: to the rear) and dead man's switch using safety lever valve.



Contents:

PG 8/100 HV: 3 m air supply hose with 1/4" male threaded connection and threaded quick coupling (STGI), 6 mm collet (collet group 7), 2 keys (1x EM SW 9/16", 1x EM SW 3/4").

PGAS 8/100 HV: including 1 m exhaust hose.

Special features:

- Constant power delivery due to the centrifugal governor.
- Compact design.

RPM	Power output [watts]	Air consumption at idle [m³/min]	Air consumption under load [m³/min]	Air supply hose internal dia. [mm]	Dimensions L x W x H [mm]	Net weight [kg]	Item no.	Designation	Price/unit GBP
10,000	600	0.17	0.85	8.5	184 x 46 x 46	0.950	80107011	PG 8/100 HV	-
					205 x 46 x 46	1.000	80107015	PGAS 8/100 HV	-



PG 8/100 V-HV | PGAS 8/100 V-HV | PGAS 8/100 VM-HV

Sophisticated air-powered straight grinder with exhaust directed to the front (PGAS: to the rear) and dead man's switch using safety lever valve. VM-HV type has slim drive extension. Good size/weight to output ratio.

Contents:

Air supply hose with 1/4" male threaded connection and threaded quick coupling (STGI), 6 mm collet (collet group 7), 2 keys (1x EM SW 9/16", 1x EM SW 3/4").

PG 8/100 V-HV: with 3 m air supply hose.

PGAS 8/100 V-HV and PGAS 8/100 VM-HV: with 1 m exhaust hose and 3 m air supply hose.

Special features:

- Extended version for work in hard-to-reach areas.
- Constant power delivery due to the centrifugal governor.

RPM	Power output [watts]	Air consumption at idle [m³/min]	Air consumption under load [m³/min]	Air supply hose internal dia. [mm]	Dimensions L x W x H [mm]	Net weight [kg]	Item no.	Designation	Price/unit GBP
10,000	600	0.17	0.85	8.5	310 x 46 x 46	1.400	80107003	PG 8/100 V-HV	-
							80107020	PGAS 8/100 V-HV	-
					338 x 46 x 46	1.200	80706085	PGAS 8/100 VM-HV	-



PGAS 3/70 HV

Sophisticated air-powered straight grinder with exhaust directed to the rear and dead man's switch using safety lever valve.

Contents:

1 m exhaust hose and 2.5 m air supply hose with 1/4" male threaded connection and threaded quick coupling (STGI), 6 mm collet

(collet group 6), 2 keys (1x EM SW 11 mm, 1x EM SW 14 mm).

Special features:

- High torque due to planetary gear.
- Compact, easy-to-handle grinder.

RPM	Power output [watts]	Air consumption at idle [m³/min]	Air consumption under load [m³/min]	Air supply hose internal dia. [mm]	Dimensions L x W x H [mm]	Net weight [kg]	Item no.	Designation	Price/unit GBP
7,000	320	0.6	0.5	8	224 x 38 x 38	0.850	80106050	PGAS 3/70 HV	-



PG 8/50 V-HV

Sophisticated air-powered straight grinder with exhaust directed to the front and dead man's switch using safety lever valve. The extended version is for work in hard-to-reach areas.

Contents:

3 m air supply hose with 1/4" male threaded connection and threaded quick coupling (STGI), 6 mm collet (collet group 7), 2 keys (1x EM SW 9/16", 1x EM SW 3/4").

Special features:

- Particularly high torque due to reduction gear.
- Can be guided precisely thanks to comfortable two-handed operation.
- Robust design for heavy-duty use.

RPM	Power output [watts]	Air consumption at idle [m³/min]	Air consumption under load [m³/min]	Air supply hose internal dia. [mm]	Dimensions L x W x H [mm]	Net weight [kg]	Item no.	Designation	Price/unit GBP
5,000	600	0.85	0.34	8.5	350 x 46 x 46	1.600	80106075	PG 8/50 V-HV	-



PGAS 3/35 HV

Sophisticated air-powered straight grinder with exhaust directed to the rear and dead man's switch using safety lever valve.

Contents:

1 m exhaust hose and 2.5 m air supply hose with 1/4" male threaded connection and threaded quick coupling (STGI), 6 mm collet

(collet group 6), 2 keys (1x EM SW 11 mm, 1x EM SW 14 mm).

Special features:

- High torque due to planetary gear.
- Compact, easy-to-handle grinder.

RPM	Power output [watts]	Air consumption at idle [m³/min]	Air consumption under load [m³/min]	Air supply hose internal dia. [mm]	Dimensions L x W x H [mm]	Net weight [kg]	Item no.	Designation	Price/unit GBP
3,500	320	0.6	0.5	8	224 x 38 x 38	0.850	80106055	PGAS 3/35 HV	-



PGAS 2/5 DS

Sophisticated air-powered straight grinder with exhaust directed to the rear, instant-start throttle type and easy-to-handle drive for use of countersinks.

Contents:

1 m exhaust hose and 2.5 m air supply hose with 1/4" male threaded connection and threaded quick coupling (STGI), 1 overhead trolley, 6 mm collet (collet group 20), 2 keys (1x EM SW 12 mm, 1x EM SW 17 mm).

Special features:

- Instant start enables fast, reliable working.
- Rotational speed regulation for optimum results.

RPM	Power output [watts]	Air consumption at idle [m³/min]	Air consumption under load [m³/min]	Air supply hose internal dia. [mm]	Dimensions L x W x H [mm]	Net weight [kg]	Item no.	Designation	Price/unit GBP
500	160	0.4	0.3	6	235 x 30 x 30	0.564	80106056	PGAS 2/5 DS	-



PWAS 1/800 DV | PWAS 1/800 HV

Sophisticated compressed-air angle grinder with exhaust directed to the rear and collet. DV: with ring throttle version, HV: with dead man's switch using safety lever valve. Held like a pen.

Contents:

0.75 m exhaust hose and 1.5 m air supply hose with 1/4" male threaded connection and threaded quick coupling (STGI), 3 mm collet (collet group 2), 2 keys (DM SW 6/8 mm).

- Smallest, high-revving angle grinder.

Special features:

- Robust, without angular gear.
- Light and easy to handle.

RPM	Power output [watts]	Air consumption at idle [m³/min]	Air consumption under load [m³/min]	Air supply hose internal dia. [mm]	Dimensions L x W x H [mm]	Net weight [kg]	Item no.	Designation	Price/unit GBP
80,000	75	0.15	0.14	4.8	139 x 21 x 40	0.094	80205010	PWAS 1/800 DV	-
						0.134	80205015	PWAS 1/800 HV	-



PWSA 1/250

Sophisticated compressed-air angle grinder with exhaust directed to the rear and collet. The drive with a ring throttle can be used for continuous use. Compact design and ideal for working in hard-to-reach areas.



Contents:

0.6 m exhaust hose and 2 m air supply hose with 1/4" male threaded connection and threaded quick coupling (STGI), 3 mm collet (collet group 3), 2 keys (1x EM SW 10 mm, 1x EM SW 13/64").

Special features:

- Low angle head height.
- Slim angle head.
- Light and easy to handle.

RPM	Power output [watts]	Air consumption at idle [m³/min]	Air consumption under load [m³/min]	Air supply hose internal dia. [mm]	Dimensions L x W x H [mm]	Net weight [kg]	Item no.	Designation	Price/unit GBP
25,000	110	0.3	0.2	5	149 x 20 x 39	0.217	80205025	PWSA 1/250	-



Arbor

The arbor replaces the collet. It is used for direct mounting of COMBIDISC tools.

Net weight [kg]	Item no.	Designation	Price/unit GBP
0.006	80810015	ASD 20 CD 1/4-20 G	-



Air grinders

Angle grinder with collet



PWAS 2/200 DV | PWAS 2/200 HV

Sophisticated compressed-air angle grinder with exhaust directed to the rear and collet. DV: with ring throttle version, HV: with dead man's switch using safety lever valve.

Contents:

1 m exhaust hose and 2.5 m air supply hose with 1/4" male threaded connection and threaded quick coupling (STGI), 6 mm collet (collet group 6), 2 keys (1x EM SW 11 mm, 1x EM SW 14 mm).

Special features:

- Slim angle head for work in hard-to-reach areas.
- Easy to handle, compact shape.

RPM	Power output [watts]	Air consumption at idle [m³/min]	Air consumption under load [m³/min]	Air supply hose internal dia. [mm]	Dimensions L x W x H [mm]	Net weight [kg]	Item no.	Designation	Price/unit GBP
20,000	230	0.55	0.45	6	167 x 30 x 70	0.420	80205038	PWAS 2/200 DV	-
						0.460	80205036	PWAS 2/200 HV	-



PWSA 4/200 HV

Sophisticated compressed-air angle grinder with exhaust directed to the rear, dead man's switch using safety lever valve and collet. Features a low angle head height and high spindle concentricity.

Contents:

1 m exhaust hose and 3 m air supply hose with 1/4" male threaded connection and threaded quick coupling (STGI), 6 mm collet (collet group 5), 2 keys (1x EM SW 7/16", 1x EM SW 9/16").

Special features:

- Compact design.
- Good size/weight to output ratio.
- Dead man's switch using safety lever valve.

RPM	Power output [watts]	Air consumption at idle [m³/min]	Air consumption under load [m³/min]	Air supply hose internal dia. [mm]	Dimensions L x W x H [mm]	Net weight [kg]	Item no.	Designation	Price/unit GBP
20,000	300	0.57	0.42	8.5	150 x 37 x 69	0.520	80700277	PWSA 4/200 HV	-



PWAS 4/200 HV

Sophisticated compressed-air angle grinder with exhaust directed to the rear, dead man's switch using safety lever valve and collet. Ideal for work in hard-to-reach areas.

Contents:

1 m exhaust hose and 2.5 m air supply hose with 1/4" male threaded connection and threaded quick coupling (STGI), 6 mm collet

(collet group 6), 2 keys (1x EM SW 11 mm, 1x EM SW 14 mm).

Special features:

- Low angle head height.
- Dead man's switch using safety lever valve.

RPM	Power output [watts]	Air consumption at idle [m³/min]	Air consumption under load [m³/min]	Air supply hose internal dia. [mm]	Dimensions L x W x H [mm]	Net weight [kg]	Item no.	Designation	Price/unit GBP
20,000	370	0.7	0.6	8	205 x 39 x 67	0.920	80209011	PWAS 4/200 HV	-





PWAS 4/160 HV

Sophisticated compressed-air angle grinder with exhaust directed to the rear, dead man's switch using safety lever valve and collet. Ideal for work in hard-to-reach areas.

Contents:

1 m exhaust hose and 2.5 m air supply hose with 1/4" male threaded connection and threaded quick coupling (STGI), 6 mm collet (collet group 6), 2 keys (1x EM SW 11 mm, 1x EM SW 14 mm).

Special features:

- Low angle head height.
- Constant power delivery due to the centrifugal governor.

RPM	Power output [watts]	Air consumption at idle [m³/min]	Air consumption under load [m³/min]	Air supply hose internal dia. [mm]	Dimensions L x W x H [mm]	Net weight [kg]	Item no.	Designation	Price/unit GBP
16,000	370	0.55	0.6	8	228 x 39 x 67	1.004	80209016	PWAS 4/160 HV	-



PWAS 4/120 HV

Sophisticated compressed-air angle grinder with exhaust directed to the rear, dead man's switch using safety lever valve and collet. Ideal for work in hard-to-reach areas.

Contents:

1 m exhaust hose and 2.5 m air supply hose with 1/4" male threaded connection and threaded quick coupling (STGI), 6 mm collet (collet group 6), 2 keys (1x EM SW 11 mm, 1x EM SW 14 mm).

Special features:

- Low angle head height.
- Constant power delivery due to the centrifugal governor.

RPM	Power output [watts]	Air consumption at idle [m³/min]	Air consumption under load [m³/min]	Air supply hose internal dia. [mm]	Dimensions L x W x H [mm]	Net weight [kg]	Item no.	Designation	Price/unit GBP
12,000	370	0.5	0.6	8	228 x 39 x 67	1.004	80209006	PWAS 4/120 HV	-

Angle grinder with threaded spindle



PWA 2/120 DV | PWA 2/120 HV

Sophisticated compressed-air angle grinder with 1/4-20 UNC threaded spindle and exhaust directed to the rear. DV: with ring throttle version, HV: with dead man's switch using safety lever valve.

Contents:

1 m exhaust hose and 2.5 m air supply hose with 1/4" male threaded connection and threaded quick coupling (STGI), 1 key (EM SW 11 mm).

- Flat angle head for work in hard-to-reach areas.

Special features:

- Special spindle for holding all COMBIDISC tools (use a backing pad without shank).

RPM	Power output [watts]	Air consumption at idle [m³/min]	Air consumption under load [m³/min]	Air supply hose internal dia. [mm]	Dimensions L x W x H [mm]	Net weight [kg]	Item no.	Designation	Price/unit GBP
12,000	230	0.55	0.45	6	175 x 30 x 36	0.476	80205039	PWA 2/120 DV	-
						0.516	80205037	PWA 2/120 HV	-



Air grinders

Angle grinder with threaded spindle



Extensions for drive spindles

The shank of the abrasive disc holders can be replaced by suitable adapters. This enables the abrasive disc holder to be mounted directly to the drive spindle of the tool drive. Suitable for drives with spindle 1/4-20 UNC.

Net weight [kg]	Item no.	Designation	Price/unit GBP
0.010	87100727	SPV20 CD 1/4-20 UNC	-



PWA 11/120 HV

Sophisticated compressed-air angle grinder with M14 threaded spindle and 22.23 mm tool mounting, exhaust directed to the rear and dead man's switch using safety lever valve. With maximum tool diameter up to 125 mm.

Contents:

1 m exhaust hose and 2.5 m air supply hose with 1/2" male threaded connection, 1 clamping nut, 2 flange screws, 2 spacer sleeves, 2 keys (1x STL SW 35 x 5 mm, 1x SKS SW 4 mm), guard, anti-vibration handle.

Special features:

- Robust design for heavy-duty use.
- Constant power delivery due to the centrifugal governor.
- Spindle lock pin for tool change with one key.

RPM	Power output [watts]	Air consumption at idle [m³/min]	Air consumption under load [m³/min]	Air supply hose internal dia. [mm]	Dimensions L x W x H [mm]	Net weight [kg]	Item no.	Designation	Price/unit GBP
12,000	1,100	0.5	1.2	13	285 x 47 x 98	2.100	80204081	PWA 11/120 HV	-



PWT 26/120 HV M14

Sophisticated compressed-air angle grinder with M14 threaded spindle and 22.23 mm tool mounting, exhaust directed to the bottom and dead man's switch using safety lever valve. With maximum tool diameter of up to 125 mm and very powerful turbine motor.



Contents:

1/2" female connecting thread, 2 keys (1x STL SW 35 x 5 mm, 1x SKS SW 5 mm), 1 clamping nut, 1 clamping flange, 1 spacer, guard, anti-vibration handle.

Special features:

- M14 threaded spindle for convenient mounting of various tools.
- Constant power delivery due to the centrifugal governor and with spindle lock pin for tool change with one key.

RPM	Power output [watts]	Air consumption at idle [m³/min]	Air consumption under load [m³/min]	Air supply hose internal dia. [mm]	Dimensions L x W x H [mm]	Net weight [kg]	Item no.	Designation	Price/unit GBP
12,000	2,600	0.9	2.25	16	295 x 40 x 97	2.200	80201010	PWT 26/120 HV M14	-





PWT 26/100 HV M14

Sophisticated compressed-air angle grinder with M14 threaded spindle and 22.23 mm tool mounting, exhaust directed to the bottom and dead man's switch using safety lever valve. With maximum **tool diameter of up to 150 mm** and very powerful turbine motor.

Contents:
1/2" female connecting thread, 2 keys (1x STL SW 35 x 5 mm, 1x SKS SW 5 mm), 2 clamping nuts, 3 clamping flanges, guard, anti-vibration handle.

Special features:

- M14 threaded spindle for convenient mounting of various tools.
- Constant power delivery due to the centrifugal governor and with spindle lock pin for tool change with one key.

RPM	Power output [watts]	Air consumption at idle [m³/min]	Air consumption under load [m³/min]	Air supply hose internal dia. [mm]	Dimensions L x W x H [mm]	Net weight [kg]	Item no.	Designation	Price/unit GBP
10,000	2,600	0.9	2.25	16	295 x 40 x 97	2.580	80201020	PWT 26/100 HV M14	-



PWT 26/85 HV M14

Sophisticated compressed-air angle grinder with M14 threaded spindle and 22.23 mm tool mounting, exhaust directed to the bottom and dead man's switch using safety lever valve. With maximum **tool diameter of up to 180 mm** and very powerful turbine motor.



Contents:

1/2" female connecting thread, 2 keys (1x STL SW 35 x 5 mm, 1x SKS SW 5 mm), 2 clamping nuts, 3 clamping flanges, guard, anti-vibration handle.

Special features:

- M14 threaded spindle for convenient mounting of various tools.
- Constant power delivery due to the centrifugal governor and with spindle lock pin for tool change with one key.

RPM	Power output [watts]	Air consumption at idle [m³/min]	Air consumption under load [m³/min]	Air supply hose internal dia. [mm]	Dimensions L x W x H [mm]	Net weight [kg]	Item no.	Designation	Price/unit GBP
8,500	2,600	0.9	2.25	16	295 x 40 x 97	2.800	80201030	PWT 26/85 HV M14	-

Belt grinders and belt arms



PBA 2/200 HV

Sophisticated compressed-air belt grinder with a **belt length of 305 mm x belt width 3 – 16 mm**, exhaust directed to the rear and dead man's switch using safety lever valve.

Contents:
1 m exhaust hose and 2.5 m air supply hose with 1/4" male threaded connection and threaded quick coupling (STGI), 1 key (1x SKS SW 4 mm), protective cover.

Special features:

- Incl. belt grinder attachment arm BSVAK 9/9 x 305.
- Easy to handle, compact shape.

Belt speed [m/s]	Power output [watts]	Air consumption at idle [m³/min]	Air consumption under load [m³/min]	Air supply hose internal dia. [mm]	Dimensions L x W x H [mm]	Net weight [kg]	Item no.	Designation	Price/unit GBP
22	230	0.55	0.45	6	290 x 30 x 75	0.687	80705051	PBA 2/200 HV	-





BSVAK 9/25



BSVAK 9/25-1



BSVAK 4/16



BSVAK 9/9



BSVAK 9/16

Belt grinder attachment arms for PBA 2/200 HV

Belt grinder attachment arms in robust design and extremely slim fixing lug on the facing roller. With asymmetrical arms for flush lateral grinding and belt arm guide that can be fixed.

Special features:

- Use of the full roller width.
- BSVAK 9/25-1 with conical guide roller (range 1 mm).
- BSVAK 4/16, BSVAK 9/9 and BSVAK 9/16 with pad for stabilisation/support.

Width x roll dia. [mm]	Suitable belt width [mm]	Suitable belt length [mm]	Net weight [kg]	Item no.	Designation	Price/unit GBP
9 x 25	3, 6, 9, 12, 16	305	0.083	84200318	BSVAK 9/25 x 305	-
	3, 6, 9, 12	305	0.082	84200319	BSVAK 9/25-1 x 305	-
4 x 16	3, 6, 9	305	0.052	84200315	BSVAK 4/16 x 305	-
9 x 9	9, 12	305	0.075	84200316	BSVAK 9/9 x 305	-
9 x 16	9, 12	305	0.088	84200317	BSVAK 9/16 x 305	-



PBA 4/160 HV

Sophisticated compressed-air belt grinder with a belt length of 520 mm (*610 mm) x belt width 3 – 20 mm, exhaust directed to the rear and dead man's switch using safety lever valve.

Contents:

1 m exhaust hose and 2.5 m air supply hose with 1/4" male threaded connection and threaded quick coupling (STGI), protective cover, 2 keys (1x SKS SW 2.5 mm, 1x SKS SW 4 mm).

Special features:

- *With adapter BSAD 41/36 x 610.
- The belt grinder attachment can be pivoted on the drive system.
- Incl. belt grinder attachment arm.

Belt speed [m/s]	Power output [watts]	Air consumption at idle [m³/min]	Air consumption under load [m³/min]	Air supply hose internal dia. [mm]	Dimensions L x W x H [mm]	Net weight [kg]	Item no.	Designation	Price/unit GBP
19.3	370	0.55	0.6	8	460 x 39 x 75	1.286	80705011	PBA 4/160 HV	-



Adapter for belt grinder attachment arms

Adapter for belt grinder attachment arm. Enables the use of belts with a belt length of 610 mm and a belt width of 3 – 20 mm.

Suitable belt length [mm]	Net weight [kg]	Item no.	Designation	Price/unit GBP
610	0.080	84200230	BSAD 41/36 x 610	-





BSVA 9/25



BSVA 9/25-1



BSVA 4/16



BSVA 9/16



BSVA 12/19



BSVA 18/23

Belt grinder attachment arms for PBA 4/160 HV

Belt grinder attachment arms in robust design and extremely slim fixing lug on the facing roller. With asymmetrical arms for flush lateral grinding and belt arm guide that can be fixed.

Special features:

- Use of the full roller width.
- BSVA 9/25-1 with conical guide roller (range 1 mm).
- BSVA 18/23 with metal roller and pad for stabilisation/support.

Width x roll dia. [mm]	Suitable belt width [mm]	Suitable belt length [mm]	Net weight [kg]	Item no.	Designation	Price/unit GBP
9 x 25	3, 6, 9, 12, 16	520, 610	0.095	84200070	BSVA 9/25 x 520	-
	3, 6, 9, 12	520, 610	0.095	84200072	BSVA 9/25-1 x 520	-
4 x 16	3, 6, 9	520, 610	0.060	84200050	BSVA 4/16 x 520	-
9 x 16	9, 12	520, 610	0.096	84200060	BSVA 9/16 x 520	-
12 x 19	12, 16	520, 610	0.107	84200080	BSVA 12/19 x 520	-
18 x 23	20	520, 610	0.150	84200085	BSVA 18/23 x 520	-



PBS 5/155 HV 824 | PBS 5/155 HV 1924 | PBS 5/155 HV 2324

Sophisticated compressed-air belt grinder with a belt length of 480 mm (*610 mm) x belt width 6 – 25 mm, attachment arm, exhaust directed to the front and dead man's switch using safety lever valve.

Contents:

3 m air supply hose with 1/4" male threaded connection and threaded quick coupling (STGI), 2 keys (1x SKS SW 3 mm, 1x SKS SW 5/32").

Special features:

- *Belt length 610 mm x width 6 – 12 mm with belt grinder attachment arm BSVA 5/155-4/16 or 9/16.
- The belt grinder attachment can be pivoted on the drive system.
- Balanced handling.

Belt speed [m/s]	Power output [watts]	Air consumption at idle [m³/min]	Air consumption under load [m³/min]	Air supply hose internal dia. [mm]	Dimensions L x W x H [mm]	Net weight [kg]	Item no.	Designation	Price/unit GBP
21	370	0.6	0.4	8.5	397 x 37 x 115	1.390	80704010	PBS 5/155 HV 824	-
							80704020	PBS 5/155 HV 1924	-
							80704025	PBS 5/155 HV 2324	-



Air grinders

Belt grinders and belt arms



BSVA 5/155-8/24x480



BSVA 5/155-19/24x480



BSVA 5/155-23/24x480



BSVA 5/155-4/16x610



BSVA 5/155-9/16x610

Belt grinder attachment arms for PBS 5/155 HV

Belt grinder attachment arms in robust steel design and extremely slim fixing lug on the facing roller.

Special features:

- Use of the full roller width.
- With asymmetrical arms for flush lateral grinding and belt arm guide that can be fixed.

Width x roll dia. [mm]	Suitable belt width [mm]	Suitable belt length [mm]	Net weight [kg]	Item no.	Designation	Price/unit GBP
8 x 24	6, 10, 12	480	0.070	90002116	BSVA 5/155-8/24x480	-
19 x 24	16, 20	480	0.086	90002115	BSVA 5/155-19/24x480	-
23 x 24	25	480	0.088	90002117	BSVA 5/155-23/24x480	-
4 x 16	6	610	0.070	90002152	BSVA 5/155-4/16x610	-
9 x 16	6, 10, 12	610	0.132	90002151	BSVA 5/155-9/16x610	-

Filing machines



PFGA 07/220

Air-powered filing machine with exhaust directed to the rear for work on surfaces and in hard-to-reach areas. The drive with a ring throttle can be used for continuous use.



Contents:

0.32 m exhaust hose and 1.5 m air supply hose with 1/4" female threaded connection and threaded quick coupling (STGA), 1 key (SKS SW 2.5 mm), arbor.

Special features:

- Light and easy to handle.
- Tool mountings: Round shank dia. 3 mm slot mounting (L x W x D) 10 x 1.5 x 10 mm for ceramic fibre files.

Frequency [strokes/ min]	Stroke length [mm]	Air con- sumption at idle [m³/min]	Air con- sumption under load [m³/min]	Air supply hose inter- nal dia. [mm]	Dimensions L x W x H [mm]	Net weight [kg]	Item no.	Designation	Price/unit GBP
22,000	0.7	0.05	0.03	4	220 x 28 x 28	0.180	80600200	PFGA 07/220	-





PF 8/90 HV

Sophisticated air-powered filing machine with exhaust directed to the front and dead man's switch using lever throttle. Suitable for files with a round shank.

Contents:

1.5 m air supply hose with 1/4" male threaded connection and threaded quick coupling (STGI), 1 key (SF 24 STG-IG 1/4).

Special features:

- Tool mounting dia. 4 mm to 6 mm.
- Smooth running and very precise.
- Very low vibrations.

Frequency [strokes/min]	Stroke length [mm]	Air consumption at idle [m³/min]	Air consumption under load [m³/min]	Air supply hose internal dia. [mm]	Dimensions L x W x H [mm]	Net weight [kg]	Item no.	Designation	Price/unit GBP
9,000	8	0.078	0.078	4.8	180 x 40 x 40	1.038	80600205	PF 8/90 HV	-



PF 4/84 SV

Sophisticated air-powered filing machine with exhaust directed to the front and push-pull throttle for convenient continuous use. Suitable for files with a round shank, ceramic fibre files and grinding stones.

Contents:

1.5 m air supply hose with 1/4" male threaded connection and threaded quick coupling (STGI), 1 key (SKS SW 3 mm).

Special features:

- Tool mounting dia. 3 mm to 4 mm.
- Smooth running and very precise.
- Very low vibrations.

Frequency [strokes/min]	Stroke length [mm]	Air consumption at idle [m³/min]	Air consumption under load [m³/min]	Air supply hose internal dia. [mm]	Dimensions L x W x H [mm]	Net weight [kg]	Item no.	Designation	Price/unit GBP
8,400	4	0.03	0.03	3	200 x 30 x 30	0.300	80600210	PF 4/84 SV	-

Marking pens



MST 32 DV

Compressed-air marking pen with exhaust directed to the front, ring throttle version and very high stroke frequency. For applying markings and labels on metal, glass, plastics. Easy guidance thanks to slim design.



Contents:

2.5 m air supply hose with 1/4" male threaded connection and threaded quick coupling (STGI), TC engraving needle.

Special features:

- F type with fine engraving needle suitable for applying markings and labels on hardened tool steel.
- M type with medium engraving needle.
- G type with coarse engraving needle.

Frequency [strokes/min]	Air consumption at idle [m³/min]	Air consumption under load [m³/min]	Air supply hose internal dia. [mm]	Dimensions L x W x H [mm]	Net weight [kg]	Item no.	Designation	Price/unit GBP
32,000	0.03	0.02	4	162 x 17 x 17	0.152	80600130	MST 32 DV F	-
						80600150	MST 32 DV G	-
						80600140	MST 32 DV M	-





Replacement TC engraving needles for marking pens

Tungsten carbide engraving needles for marking pens. For applying markings and labels on metal, glass, plastics and on hardened tool steel.

Needle tip	Net weight [kg]	Item no.	Designation	Price/unit GBP
F (fine)	0.003	98980364	HM-GN MST32 F	-
G (coarse)	0.003	98980366	HM-GN MST32 G	-
M (medium)	0.003	98980365	HM-GN MST32 M	-

Fittings



Fittings for air grinders

PFERD offers different connecting fittings for air grinders.

	Net weight [kg]	Item no.	Designation	Price/unit GBP
Double nipple				
	0.063	80801150	DNA 1/2-1/2	-
	0.019	80801145	DNA 1/4-1/4	-
Reducing nipple				
	0.008	80801163	RNI 1/2 x 1/4	-
Threaded nut				
	0.076	80801154	GW1 1/2-1/2	-
Sealing ring				
	0.001	90000512	DR 1/2"	-
		90000510	DR 1/4"	-
		90000509	DR 1/8"	-
Threaded quick coupling				
	0.105	80900004	STGA 1/2 NW12	-
	0.040	80900801	STGA 1/2-16/AC	-
Self-closing valve couplings with male thread				
	0.150	80801049	SVKA 1/2 DK	-
	0.123	80801048	SVKA 1/4 DK	-
	0.072	80801070	VKA 1/2	-

Continued on next page

Net weight [kg]	Item no.	Designation	Price/unit GBP
0.313	80801066	VKA 1/2 NW12	-
0.062	80801065	VKA 1/4	-
Self-closing valve couplings with female thread			
0.083	80801085	VKI 1/2	-
0.077	80801080	VKI 1/4	-
Accessory for robot spindle – quick coupling			
0.098	80900433	BK 14 mm - 1/2"	-
0.022	80900429	BK 12 mm - 1/4"	-
0.016	80900432	BK 10 mm - 1/4"	-
0.011	80900428	BK 8 mm - 1/4"	-
Accessory for robot spindle – air supply hose			
0.098	98980383	PLS 14 RS	-
	98980382	PLS 12 RS	-
	98980381	PLS 10 RS	-
	98980380	PLS 8 RS	-
In-line fine filter			
0.098	80807055	SF 30 STG-IG 1/2	-
0.125	80807060	SF 35 IG1/2-IG1/2	-
Maintenance unit			
0.944	80803005	ONG-A 1/2	-
2.302	80802010	ONG-A 1/4	-
Accessory for robot spindle – bottom flange			
1.686	98980646	FF 60	-
1.036	98980645	FF 46	-
0.378	98980644	FF 42	-
0.383	98980643	FF 41,5	-
0.438	98980642	FF 36	-
0.239	98980641	FF 30	-
Revolving nozzle			
0.125	80800050	DGT 1/2	-



MIM STG35 3/800

Micro motor control device with high power stability for steplessly controlling the rotational speed of micro motor handpieces. The rotational speed control can be provided by hand or via foot switch.

Contents:

2 m power cable, 2 handpiece supports.

Special features:

- Max. 80,000 RPM clockwise rotation, max. 30,000 RPM anti-clockwise rotation.

- 2 switchable connection sockets for micro motor handpieces.
- 4 free rotational speed storage spaces per connected handpiece.

For micro motor handpieces [RPM]	Power output [watts]	Voltage [volts] 50-60 Hz	Output voltage [volts]	Dimensions L x W x H [mm]	Net weight [kg]	Item no.	Designation	Price/unit GBP
80,000 – 1,000	350	230	50	250 x 215 x 130	2.980	83000025	MIM STG35 3/800	-



MIM STG25 3/600

Micro motor control device with high power stability for controlling the rotational speed of micro motor handpieces. Stepless rotational speed control can be provided by hand or via foot switch.

Contents:

2 m power cable, 2 handpiece supports.

Special features:

- Max. 60,000 RPM clockwise rotation, max. 30,000 RPM anti-clockwise rotation.

For micro motor handpieces [RPM]	Power output [watts]	Voltage [volts] 50-60 Hz	Output voltage [volts]	Dimensions L x W x H [mm]	Net weight [kg]	Item no.	Designation	Price/unit GBP
60,000 – 1,000	260	230	36	215 x 180 x 100	2.338	83000020	MIM STG25 3/600	-

Micro motor handpieces



MIM HAS 3/800 SP3



MIM HAS 2/600 SP3



MIM HAS 3/600 SP3



MIM HAS 3/600 S3



MIM HAS 3/500 VS-SP3



MIM WZS 3/300 90° S3



MIM WZS 3/300 45° S3

Compatible with the micro motor control devices

Micro motor handpieces with high power stability, very high rotation accuracy and brushless motor.

Contents:

2 keys (1x MIM SPS DK D 7, 1x MIM ARS HA D 23.5), 3 mm collet, 1.8 m handpiece cable.

Special features:

- Automatic speed limitation.
- Start interlock without clamped tool.
- Extremely energy-efficient and quiet in comparison to air grinders.

Rotational speed [RPM]	Power consumption [watts]	Power output [watts]	Low voltage [volts]	Collet group	Dimensions L x W x H [mm]	Net weight [kg]	Item no.	Designation	Price/unit GBP
Compatible with STG35									
80,000 – 1,000	350	180	50	17	175 x 30 x 30	0.330	83000120	MIM HAS 3/800 SP3	-
Compatible with STG35 and STG25									
60,000 – 1,000	260	150	36 / 50	17	160 x 30 x 30	0.260	83000102	MIM HAS 2/600 SP3	-
						0.315	83000103	MIM HAS 3/600 SP3	-
					190 x 30 x 30	0.393	83000110	MIM HAS 3/600 S3	-
50,000 – 1,000	260	150	36 / 50	17	190 x 30 x 30	0.325	83000105	MIM HAS 3/500 VS-SP3	-
30,000 – 1,000	260	120	36 / 50	18	180 x 24 x 24	0.238	83000150	MIM WZS 3/300 90° S3	-
					185 x 24 x 24	0.185	83000160	MIM WZS 3/300 45° S3	-



MIM FU-R



MIM FU-E/A



MIM VLK HAS/WZS 3M

Accessories for micro motor system

PFERD offers a Vario micro motor foot switch for stepless rotational speed control, a micro motor foot switch for switching on and off, and a 3 m micro motor extension cable for hand-pieces as accessories for micro motor systems.

Net weight [kg]	Item no.	Designation	Price/unit GBP
Vario foot switch MIM FU-R			
0.845	83000070	MIM FU-R	-
On/off foot switch MIM FU-E/A			
0.310	83000080	MIM FU-E/A	-
Extension cable MIM VLK HAS/WZS 3 m			
0.152	90014007	MIM VLK HAS/WZS 3M	-

Straight grinder



EGER 8/280

Electric straight grinder which meets the highest technical standards and incorporates the latest ergonomic findings and requirements. The digital electronics enable a constant rotational speed to be maintained.

Contents:

4 m power cable, 6 mm collet (collet group 22), 2 keys (1x EM SW 13 mm, 1x EM SW 17 mm).

Special features:

- Stepless rotational speed regulation.
- Overload protection.
- Smooth start-up to protect people, tools and the drive.

RPM	Power consumption [watts]	Power output [watts]	Voltage [volts] 50–60 Hz	Dimensions L x W x H [mm]	Net weight [kg]	Item no.	Designation	Price/unit GBP
28,000 – 8,500	750	410	230	410 x 77 x 77	1.800	83108280	EGER 8/280	-



EGER 8/90

Electric straight grinder which meets the highest technical standards and incorporates the latest ergonomic findings and requirements. The digital electronics enable a constant rotational speed to be maintained.

Contents:

4 m power cable, 6 mm collet (collet group 22), 2 keys (1x EM SW 13 mm, 1x EM SW 17 mm).

Special features:

- Stepless rotational speed regulation.
- Overload protection.
- Smooth start-up to protect people, tools and the drive.

RPM	Power consumption [watts]	Power output [watts]	Voltage [volts] 50–60 Hz	Dimensions L x W x H [mm]	Net weight [kg]	Item no.	Designation	Price/unit GBP
9,000 – 2,500	710	410	230	410 x 77 x 77	1.800	83108090	EGER 8/90	-





UWER 18/120 SI | UWER 18/110 SI

Electric angle grinder with M14 drive spindle thread and tool mounting hole dia. 22.23 mm.
Max. tool diameter up to 115 mm for 18/120 SI type and up to 125 mm for 18/110 SI type.

Contents:

4 m power cable, 1 clamping flange, 1 quick-mounting nut, surface guard, anti-vibration handle.

- With overload protection with anti-kick-back function and lateral anti-vibration handle.
- Smooth start-up to protect people, tools and the drive and lockable on/off switch.

Special features:

- With robust design for heavy-duty use, spindle lock pin, stepless rotational speed control and digital electronics for a constant rotational speed.

RPM	Power consumption [watts]	Power output [watts]	Voltage [volts] 50-60 Hz	Dimensions L x W x H [mm]	Net weight [kg]	Item no.	Designation	Price/unit GBP
11,500 – 2,800	1,750	1,150	230	400 x 70 x 80	2.800	83500200	UWER 18/120 SI	-
11,000 – 2,700	1,750	1,150	230	400 x 70 x 80	2.800	83500250	UWER 18/110 SI	-



Guards

PFERD offers various guards for safe cutting (HT) and grinding (FL).

Net weight [kg]		Item no.	Designation	Price/unit GBP
0.160	1	98970072	H45-115 FL-SV	-
0.325	1	98970071	H45-115 HT-SV	-
0.164	1	84108010	H45-125 FL-SV	-
0.351	1	84108000	H45-125 HT-SV	-



UWER 18/95 SI

Electric angle grinder with M14 drive spindle thread and tool mounting hole dia. 22.23 mm.
Max. tool diameter up to 150 mm.

Contents:

4 m power cable, 1 clamping flange, 1 quick-mounting nut, surface guard, anti-vibration handle.

- With overload protection with anti-kick-back function and lateral anti-vibration handle.
- Smooth start-up to protect people, tools and the drive and lockable on/off switch.

Special features:

- With robust design for heavy-duty use, spindle lock pin, stepless rotational speed control and digital electronics for a constant rotational speed.

RPM	Power consumption [watts]	Power output [watts]	Voltage [volts] 50-60 Hz	Dimensions L x W x H [mm]	Net weight [kg]	Item no.	Designation	Price/unit GBP
9,500 – 2,300	1,750	1,150	230	400 x 70 x 90	3.000	83500300	UWER 18/95 SI	-



Guards

PFERD offers various guards for safe cutting (HT) and grinding (FL).

Net weight [kg]		Item no.	Designation	Price/unit GBP
0.450	1	84108020	H51-150 FL-SV	-
0.491	1	84108030	H51-150 HT-SV	-



EWER 17/75

Electric angle grinder with M14 drive spindle thread and tool mounting hole dia. 22.23 mm. Max. tool diameter up to 125 mm.

Contents:

4 m power cable, 1 clamping flange, 1 clamping nut, 1 key (STL SW 35 x 5.3 mm), surface guard, anti-vibration handle.

- Adjusted rotational speed range for tools with low cutting speeds.
- With smooth start-up to protect people, tools and the drive as well as overload protection.

Special features:

- With spindle lock pin, stepless rotational speed control and digital electronics for a constant rotational speed.

RPM	Power consumption [watts]	Power output [watts]	Voltage [volts] 50-60 Hz	Dimensions L x W x H [mm]	Net weight [kg]	Item no.	Designation	Price/unit GBP
7,500 – 2,700	1,700	1,000	230	415 x 77 x 84	2.810	83500350	EWER 17/75	-

EDGE FINISH system for work on edges



UWER 18/110 EF

Electric grinder which meets the highest technical standards and incorporates the latest ergonomic findings and requirements. With M14 drive spindle thread. Max. chamfer height of 6 mm.

Contents:

4 m power cable, 3 keys (1x SKS SW 5 mm, 1x HS 40-42, 1x SDR TX 15K).

Special features:

- With spindle lock pin, stepless rotational speed control and digital electronics for a constant rotational speed.
- With anti-vibration handle.
- Smooth start-up to protect people, tools and the drive and lockable on/off switch.

RPM	Power consumption [watts]	Power output [watts]	Voltage [volts] 50–60 Hz	Dimensions L x W x H [mm]	Net weight [kg]	Item no.	Designation	Price/unit GBP
Incl. cutting insert holder								
11,000 – 2,750	1,750	1,150	230	500 x 70 x 150	7.360	83500990	EDGE FINISH UWER 18/110 EF-30° TK	-
						83500980	EDGE FINISH UWER 18/110 EF-R3/45° TK	-
Excl. cutting insert holder								
11,000 – 2,750	1,750	1,150	230	500 x 70 x 150	3.640	83501000	EDGE FINISH UWER 18/110 EF	-



Electric grinders

Burnishing machine



ESER 17/75

Electric burnishing machine with two keyways for increased power transmission on drum tools. With stepless rotational speed control and drive spindle with CD-R mounting for felt discs diameter 50 mm to protect the tool. With tool mounting dia. x width 19 x 100 mm.



Contents:

4 m power cable, hand guard, anti-vibration handle, detachable drive spindle.

Special features:

- With spindle lock pin, stepless rotational speed control and digital electronics for a constant rotational speed.
- M14 drive spindle for mounting drum tools with female thread.
- With smooth start-up to protect people, tools and the drive as well as overload protection.

RPM	Power consumption [watts]	Power output [watts]	Voltage [volts] 50–60 Hz	Dimensions L x W x H [mm]	Net weight [kg]	Item no.	Designation	Price/unit GBP
7,500 – 2,700	1,700	1,000	230	415 x 77 x 207	3.065	83300260	ESER 17/75	-



ESER 12/25

Low-speed electric burnishing machine with high torque and stepless rotational speed control. Has a drive spindle with CD-R mounting for felt discs diameter 50 mm to protect the tool. With tool mounting dia. x width 19 x 100 mm.



Contents:

4 m power cable, hand guard, anti-vibration handle, detachable drive spindle.

Special features:

- With spindle lock pin and digital electronics for a constant rotational speed as well as two keyways for increased power transmission on drum tools.
- M14 drive spindle for mounting drum tools with female thread.
- With smooth start-up to protect people, tools and the drive as well as overload protection.

RPM	Power consumption [watts]	Power output [watts]	Voltage [volts] 50–60 Hz	Dimensions L x W x H [mm]	Net weight [kg]	Item no.	Designation	Price/unit GBP
2,500 – 900	1,200	750	230	369 x 72 x 227	3.340	83300270	ESER 12/25	-

Belt grinders and belt arms



EBER 8/280

Electric belt grinder with a belt length of 520 mm (*610 mm) x width 3 – 20 mm. The belt arm can be changed without a key. With stepless rotational speed control.

Contents:

4 m power cable, 1 belt arm
BSVA 9/24 x 520, protective cover SDVH.

Special features:

- *Possible with an EBSA 610 adapter.

- Digital electronics for constant rotational speed and overload protection.
- Smooth start-up to protect people, tools and the drive.

Belt speed [m/s]	Power consumption [watts]	Power output [watts]	Voltage [volts] 50–60 Hz	Dimensions L x W x H [mm]	Net weight [kg]	Item no.	Designation	Price/unit GBP
32 – 12	800	550	230	522 x 77 x 118	2.100	83208280	EBER 8/280	-



Adapter for belt grinder attachment arms

Enables the use of belts with a belt length of 610 mm and a belt width of 3 – 20 mm.

Suitable belt length [mm]	Net weight [kg]	Item no.	Designation	Price/unit GBP
610	0.075	84200700	EBSA 610	-



BSVA 9/24



BSVA 4/18



BSVA 16/19

Belt grinder attachment arms for EBER 8/280

Belt grinder attachment arms allowing easy, quick belt replacement due to spring clamping. The belt grinder attachment can be pivoted on the respective drive system or handpiece and therefore allows flexible adaptation to each individual work situation.

Special features:

- Robust design.
- Use of the full roller width.
- Extremely slim fixing lugs on the facing roller.

Width x roll dia. [mm]	Suitable belt width [mm]	Suitable belt length [mm]	Net weight [kg]	Item no.	Designation	Price/unit GBP
9 x 24	3, 6, 9, 12, 16	520, 610	0.073	84200701	BSVA 9/24x520	-
4 x 18	3, 6, 9	520, 610	0.060	84200702	BSVA 4/18x520	-
16 x 19	12, 16	520, 610	0.100	84200703	BSVA 16/19x520	-



Protective cover for EBER 8/280

PFERD offers protective covers for the EBER 8/280.

Net weight [kg]		Item no.	Designation	Price/unit GBP
0.051		98960081	SDVH	-

Pipe belt grinder



EBER 17/75 R

Electric pipe belt grinder with a belt length of 610 – 820 mm x width 12 – 40 mm. The lockable guide roller ensures greater contact pressure or a large surface contact angle.



Contents:

4 m power cable, 1 key (SKHS SW 5 mm), 4 rolls.

Special features:

- With spindle lock pin, overload protection, stepless rotational speed control and digital electronics for a constant rotational speed.
- With telescopic arm for using different belt lengths and fixed side plates to protect the workpiece.
- Smooth start-up to protect people, tools and the drive.

Belt speed [m/s]	Power consumption [watts]	Power output [watts]	Voltage [volts] 50–60 Hz	Dimensions L x W x H [mm]	Net weight [kg]	Item no.	Designation	Price/unit GBP
22.8 – 8.2	1,700	1,000	230	595 x 77 x 190	4.027	83200250	EBER 17/75 R	-





EBER 12/25 R

Low-speed electric pipe belt grinder with a **belt length of 610 – 820 mm x width 12 – 40 mm**. With stepless rotational speed control and lockable guide roller for greater contact pressure or a large surface contact angle.



Contents:

4 m power cable, 1 key (SKHS SW 5 mm), 4 rolls.

Special features:

- With spindle lock pin and digital electronics for a constant rotational speed.
- Fixed side plates on the rolls to protect the workpiece.
- With smooth start-up to protect people, tools and the drive as well as overload protection.

Belt speed [m/s]	Power consumption [watts]	Power output [watts]	Voltage [volts] 50–60 Hz	Dimensions L x W x H [mm]	Net weight [kg]	Item no.	Designation	Price/unit GBP
7.6 – 2.7	1,200	750	230	440 x 77 x 190	4.212	83200260	EBER 12/25 R	-

How to find the matching flexible shaft to your drive

Here you will find a selection of flexible shafts for the individual drives in line with the explanation below.

Flexible shafts and handpieces/attachments must always be selected according to the required rotational speed and power output. Maximum cost-effectiveness is achieved through the combination of a high-performance tool and an optimal drive.

① Drive

Alternative drives with DIN 10 connection (Exceptions DIN 15).

② Flexible shaft (BW)

Possible flexible shafts.

③ Rotational speed [RPM]

Rotational speed range of the drive system.

④ Rotational speed range for flexible shafts and handpieces

⑤ Connection

Drive-side connection DIN 10 / DIN 15 and handpiece-side connections (G16 to G28 and DPF, SRF).

⑥ Suitable flexible shaft

- ideally suitable
- suitable
- unsuitable



① Drive motor		EMER 8/280 BW	EMER 8/90 BW	RUER 8/180 SI	MMEW 11/120	MEW 18/240 ME 22/240	MEW 18/150 ME 22/150	MME 40/150 DIN 15
③ Rotational speed range [RPM]:		28,000– 8,500	9,000– 2,500	18,000– 500	12,000– 800	24,000– 100	15,000– 100	15,000– 100
② Flexible shafts	④ Drive [RPM]							
BW 4 DIN 10/G16	40,000–15,000	⑥ ○	–	○	–	○	○	–
BW 4 PST-T DIN 10 ⑤	7,650– 1,500	–	●	●	●	○	○	–
BW 6 DIN 10/G16	25,000–11,000	●	–	●	○	●	○	–
BW 6 DIN 10/DPF	18,000– 9,000	○	–	●	○	○	○	–
BW 6 DIN 10/SRF								
BW 7 DIN 10/G22	25,000–11,000	●	–	○	○	●	○	–
BW 7 PST-T DIN 10	4,250– 1,500	–	○	○	●	○	○	–
BW 10 SE 11 DIN 10/G28	18,000– 750	○	○	–	○	●	●	–
BW 10 SE 11 DIN 15/G28	18,000– 750	○	○	–	–	–	–	●
BW 12 DIN 10/G28	12,000– 850	–	–	–	–	●	●	–
BW 12 DIN 15/G28	12,000– 850	–	–	–	–	–	–	●
FS-BW 7 DIN 10/G22	25,000–11,000	●	–	○	○	●	○	–
FS-BW 10 DIN 10/G28	18,000– 750	○	○	–	○	●	●	–
FS-BW 12 DIN 10/G28	12,000– 850	–	–	–	–	●	●	–

● = ideally suitable ○ = suitable – = unsuitable

All data is also valid for flexible shaft versions without handpieces and 2-metre versions.



Drive systems with DIN 10/DIN 15

Flexible shaft drives – EL motors for flexible shafts and accessories



EMER 8/280 BW

Electronic flexible shaft drive with stepless rotational speed control and DIN 10 flexible shaft connection. With digital electronics for constant rotational speed.



Contents:

4 m power cable, 2 keys (STS D 4 mm).

Special features:

- A pipe stand protects the drive.
- Overload protection.
- Smooth start-up to protect people, tools and the drive.

Rotational speed [RPM]	Power consumption [watts]	Power output [watts]	Voltage [volts] 50–60 Hz	Dimensions L x W x H [mm]	Net weight [kg]	Item no.	Designation	Price/unit GBP
28,000 – 8,500	750	410	230	455 x 120 x 120	2.500	85206400	EMER 8/280 BW	-



EMER 8/90 BW

Electronic flexible shaft drive with stepless rotational speed control and DIN 10 flexible shaft connection. With digital electronics for constant rotational speed.



Contents:

4 m power cable, 2 keys (STS D 4 mm).

Special features:

- A pipe stand protects the drive.
- Overload protection.
- Smooth start-up to protect people, tools and the drive.

Rotational speed [RPM]	Power consumption [watts]	Power output [watts]	Voltage [volts] 50–60 Hz	Dimensions L x W x H [mm]	Net weight [kg]	Item no.	Designation	Price/unit GBP
9,000 – 2,500	710	410	230	455 x 120 x 120	2.500	85206410	EMER 8/90 BW	-





RUER 8/180 SI

Electronic flexible shaft drive with DIN 10 flexible shaft connection and robust design for heavy-duty use and stepless rotational speed control. Particularly suitable for use in tool and mould construction.

Contents:

2.5 m power cable, 2.25 m connecting cable,
2 keys (STS D 4 mm).

Special features:

- Electronics for constant rotational speed.
- Overload protection.
- Very little noise generated.

Rotational speed [RPM]	Power consumption [watts]	Power output [watts]	Voltage [volts] 50–60 Hz	Dimensions L x W x H [mm]	Net weight [kg]	Item no.	Designation	Price/unit GBP
18,000 – 500	1,020	600	230	222 x 98 x 98	1.650	85205710	RUER 8/180 SI	-



Accessories for tool drives RUER

Table stand TS L 1400 for attachment to bench tops up to 65 mm thick with screw clamp. The support TSA L 1400 matches the table stand and allows optimum placement of the various handpieces, ready for use.

Description	Net weight [kg]	Item no.	Designation	Price/unit GBP
Table stand	2.170	86320001	TS L 1400	-
Handpiece support	0.450	86320005	TSA L 1400	-

Flexible shaft drives for Mini-Mammoth Electronic and accessories



MMEW 11/120

Electronic flexible shaft drive with DIN 10 flexible shaft connection and robust design for heavy-duty use, stepless rotational speed control and very little noise generated.

Contents:

2.5 m power cable, 2 keys (STS D 4 mm).

Special features:

- Most powerful and stable torque with stepless rotational speed control.

- Mounted grinding and polishing tools with diameter ≥ 60 mm are not suitable for continuous use with the Mini-Mammoth Electronic.
- With smooth start-up to protect people, tools and the drive as well as overload protection.

Rotational speed [RPM]	Power consumption [watts]	Power output [watts]	Voltage [volts] 50–60 Hz	Dimensions L x W x H [mm]	Net weight [kg]	Item no.	Designation	Price/unit GBP
12,000 – 800	1,100	800	230	270 x 160 x 180	7.900	85205800	MMEW 11/120	-



Drive systems with DIN 10/DIN 15

Flexible shaft drives for Mammoth Electronic and accessories



MEW 18/240 | ME 22/240

Electronic flexible shaft drive with DIN 10 flexible shaft connection, generates very little noise and has high torque, even at low rotational speeds. Achieves a maximum rotational speed of 24,000 RPM.

Contents:

MEW 18/240 with 1-phase AC: 4 m power cable with plug, 2 Allen keys.

ME 22/240 with 3-phase AC: 4 m power cable without plug, 2 keys (STS D 4 mm).

- With smooth start-up to protect people, tools and the drive as well as overload protection.

Special features:

- Most powerful and stable torque with stepless rotational speed control.
- Removable operating console with possibility of extension, e.g. hanging design for work in boilers.

Rotational speed	Power consumption [watts]	Power output [watts]	Voltage [volts] 50–60 Hz	Dimensions L x W x H [mm]	Net weight [kg]	Item no.	Designation	Price/unit GBP
24,000 – 100	2,000	1,500	200 – 240	445 x 200 x 320	24.500	85202037	MEW 18/240	-
	2,700	2,200	380 – 480	445 x 200 x 320	24.500	85202041	ME 22/240 400 V	-



MEW 18/150 | ME 22/150

Electronic flexible shaft drive with DIN 10 flexible shaft connection and high torque over the entire rotational speed range.

Contents:

MEW 18/150 with 1-phase AC: 4 m power cable with plug, 2 keys (STS D 4 mm).

ME 22/150 with 3-phase AC: 4 m power cable without plug, 2 keys (STS D 4 mm).

Special features:

- Most powerful and stable torque with overload protection and stepless rotational speed control (with overdrive ST 103 DIN 10 up to max. 40,000 RPM).
- Removable operating console with possibility of extension, e.g. hanging design for work in boilers.
- Frequency inverter for maintaining constant rotational speed.

Rotational speed	Power consumption [watts]	Power output [watts]	Voltage [volts] 50–60 Hz	Dimensions L x W x H [mm]	Net weight [kg]	Item no.	Designation	Price/unit GBP
15,000 – 100	2,000	1,500	200 – 240	445 x 200 x 320	24.500	85202036	MEW 18/150	-
	2,700	2,200	380 – 480	445 x 200 x 320	24.500	85202040	ME 22/150 400 V	-





FSTK 22



FSE 22 2-POLIG

Accessories for Mammoth Electronic

Remote control cable FSTK 22 for extending the operating console.

Foot switch FSE 22 for switching the drive on and off.

Base FME with pivot device.

Overhead trolley B1 ME and B2 ME.

Trolley WA D ME with tool tray.

Shaft support WAL 4-12 for flexible shaft.



FME



B1 ME



B2 ME



WA D ME



WAL 4-12

Description	Net weight [kg]	Item no.	Designation	Price/unit GBP
Remote control cable	0.635	85202165	FSTK 22	-
Foot switch	1.000	85202105	FSE 22 2-POLIG	-
Base	2.000	85202130	FME	-
Overhead trolley	1.200	85202110	B1 ME	-
Overhead trolley on castors	1.800	85202120	B2 ME	-
Trolley	14.200	85202140	WA D ME	-
Shaft support	0.460	85202150	WAL 4-12	-

Drive systems with DIN 10/DIN 15

Flexible shaft drives for Maxi-Mammoth Electronic and accessories



MME 40/150

Electronic flexible shaft drive with DIN 15 flexible shaft connection, generates very little noise and with 3-phase alternating current. High torque over the entire rotational speed range. Generates very little noise.

Contents:

4 m power cable without plug, 2 keys (STS D 6 mm).

Special features:

- Most powerful and stable torque with overload protection and stepless rotational speed control 100 to 15,000 RPM.
- Removable operating console with possibility of extension.

- With smooth start-up to protect people, tools and the drive as well as a frequency inverter for maintaining a constant rotational speed.

Rotational speed	Power consumption [watts]	Power output [watts]	Voltage [volts] 50–60 Hz	Dimensions L x W x H [mm]	Net weight [kg]	Item no.	Designation	Price/unit GBP
15,000 – 100	6,100	4,000	340 – 480	470 x 220 x 490	36.160	85202060	MME 40/150 400 V	-



FSTK 40



FSE 22 2-POLIG

Accessories for Maxi-Mammoth Electronic

Remote control cable FSTK 40 for extending the removable operating console with cover plate to protect the motor.

Foot switch FSE 22 for switching the drive on and off via the remote control interface.

Trolley WA D ME with tool tray.



WA D ME

Description	Net weight [kg]	Item no.	Designation	Price/unit GBP
Remote control cable	0.635	85202170	FSTK 40	-
Foot switch	1.000	85202105	FSE 22 2-POLIG	-
Trolley	14.200	85202140	WA D ME	-



BW 4



BW 4 oHA



SCH 4



SE 4

Flexible shaft 4

With low power output requirements, it is possible to fall below the rotational speed range. The **radius of curvature must not be less than 100 mm**. After approximately 100 operating hours, the core of the flexible shaft must be re-lubricated.

Special features:

- Special lengths available on request.
- Cores and hoses with double-sided sliding coupling on request.

Rotational speed range [RPM]	Drive-side coupling DIN / dia. [mm]	Handpiece-side coupling G / dia. [mm]	Dimensions dia. x length [mm]	Net weight [kg]	Item no.	Designation	Price/unit GBP
Flexible shaft inc. handpiece (HA 4 G16)							
40,000 – 24,000	10 / 30	16 / 16	13 x 1,400	0.630	86100505	BW 4 DIN10/G16	-
Flexible shaft without handpiece							
40,000 – 24,000	10 / 30	16 / 16	13 x 1,329	0.450	86200505	BW 4 DIN10/G16 oHA	-
Replacement casing							
-	10 / 30	16 / 16	13 x 1,300	0.330	86200605	SCH 4 DIN10/G16	-
Replacement core							
40,000 – 24,000	10 / M10	16 / 3,5/2,45	4 x 1,329	0.120	86200305	SE 4 DIN10/G16	-



HA 4 G16



WHA 4 90° G16

Handpieces

Handpieces with significantly better ergonomics.

Contents:

HA 4 G16: 1 collet 6 mm, 3 keys (1x EM SW 11 mm, 1x EM SW 12 mm, 1x EM SW 14 mm).

WHA 4 90° G16: 1 collet 6 mm, 3 keys (1x EM SW 11 mm, 1x EM SW 12 mm, 1x EM SW 14 mm).

Max. RPM	Handpiece-side coupling G / dia. [mm]	Dimensions dia. x length [mm]	Transmission ratio	Net weight [kg]	Item no.	Designation	Price/unit GBP
40,000	16 / 16	24 x 120	-	0.180	86200035	HA 4 G16	-
20,000	16 / 16	70 x 120	1,8:1	0.304	86300121	WHA 4 90° G16	-



Drive systems with DIN 10/DIN 15

Flexible shaft 6 and handpieces



BW 6



BW 6 oHA



SCH 6



SE 6

Flexible shaft 6

With low power output requirements, it is possible to fall below the rotational speed range. The radius of curvature must not be less than 140 mm. After approximately 100 operating hours, the core of the flexible shaft must be re-lubricated.

Special features:

- Special lengths available on request.

Rotational speed range [RPM]	Drive-side coupling DIN / dia. [mm]	Handpiece-side coupling G / dia. [mm]	Dimensions dia. x length [mm]	Net weight [kg]	Item no.	Designation	Price/unit GBP
Flexible shaft inc. handpiece (HA 4 G16)							
25,000 – 11,000	10 / 30	16 / 16	16 x 1,650	1.190	86210051	BW 6 DIN10/G16	-
Flexible shaft without handpiece							
25,000 – 11,000	10 / 30	16 / 16	16 x 1,583	1.100	86210060	BW 6 DIN10/G16 oHA	-
Replacement casing							
-	10 / 30	16 / 16	16 x 1,553	0.740	86210080	SCH 6 DIN10/G16	-
Replacement core							
25,000 – 11,000	10 / M10	16 / 3,5/2,45	6 x 1,583	0.270	86210070	SE 6 DIN10/G16	-



HA 4 G16



WHA 4 90° G16

Handpieces

Handpieces with significantly better ergonomics.

Contents:

HA 4 G16: 1 collet 6 mm, 3 keys (1x EM SW 11 mm, 1x EM SW 12 mm, 1x EM SW 14 mm).

WHA 4 90° G16: 1 collet 6 mm, 3 keys (1x EM SW 11 mm, 1x EM SW 12 mm, 1x EM SW 14 mm).

Max. RPM	Handpiece-side coupling G / dia. [mm]	Dimensions dia. x length [mm]	Transmission ratio	Net weight [kg]	Item no.	Designation	Price/unit GBP
40,000	16 / 16	24 x 120	-	0.180	86200035	HA 4 G16	-
20,000	16 / 16	70 x 120	1,8:1	0.304	86300121	WHA 4 90° G16	-

Flexible shaft 6 Z and handpieces



BW 6 Z

DPF



BW 6 Z

SRF

Flexible shaft 6 Z

With low power output requirements, it is possible to fall below the rotational speed range. The radius of curvature must not be less than 140 mm. After approximately 100 operating hours, the core of the flexible shaft must be re-lubricated.

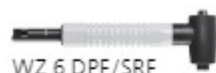
Special features:

- Special lengths available on request.

Rotational speed range [RPM]	Drive-side coupling DIN / dia. [mm]	Handpiece-side coupling G / dia. [mm]	Dimensions dia. x length [mm]	Net weight [kg]	Item no.	Designation	Price/unit GBP
Flexible shaft (without handpiece having duplex spring coupling DPF)							
18,000 – 9,000	10 / 30	DPF / 10	12 x 1,250	0.800	86210010	BW 6 Z DIN 10/DPF oHA	-
Flexible shaft (without handpiece having expansion ring coupling SRF)							
18,000 – 9,000	10 / 30	SRF / 10	12 x 1,250	0.800	86210020	BW 6 Z DIN 10/SRF oHA	-



HA 6 Z DPF/SRF HA 6 Z SP 3.0 DPF/SRF



WZ 6 DPF/SRF



WZT 6 3.0 DPF/SRF



WZT 6 45° 6.0 DPF/SRF

Handpieces

All handpieces have a handpiece-side coupling DPF/SRF. Type WZT comes with a telescopic system.

Contents:

HA 6 Z DPF/SRF: 1 collet 6 mm, 2 keys (1x EM SW 9 mm, 1x STS D 2.5 mm).

HA 6 Z SP 3.0 DPF/SRF: 1 collet 3 mm.

WZ 6 DPF/SRF: 1 collet 6 mm, 2 keys (1x EM SW 9 mm, 1x SKS SW 4 mm).

WZT 6 3.0 DPF/SRF: 1 collet 3 mm, 2 keys (EM SW 7 mm).

WZT 6 45° 6.0 DPF/SRF: 1 collet 6 mm, 2 keys (1x EM SW 9 mm, 1x EM SW 14 mm).

Max. RPM	Handpiece-side coupling G / dia. [mm]	Dimensions dia. x length [mm]	Transmission ratio	Net weight [kg]	Item no.	Designation	Price/unit GBP
18,000	DPF/SRF / 10	24 x 140	-	0.131	86210100	HA 6 Z DPF/SRF	-
		22 x 139	-	0.109	86210110	HA 6 Z SP 3.0 DPF/SRF	-
		50 x 170	1,25:1	0.225	86210120	WZ 6 DPF/SRF	-
		35 x 170	1,38:1	0.170	86210130	WZT 6 3.0 DPF/SRF	-
		45 x 200	1,53:1	0.210	86210140	WZT 6 45° 6.0 DPF/SRF	-

Flexible shaft 7 and handpieces



BW 7



BW 7 oHA



SCH 7



SE 7

Flexible shaft 7

With low power output requirements, it is possible to fall below the rotational speed range. The radius of curvature must not be less than 140 mm. After approximately 100 operating hours, the core of the flexible shaft must be re-lubricated.

Special features:

- Special lengths available on request.
- Cores and hoses with double-sided sliding coupling on request.

Rotational speed range [RPM]	Drive-side coupling DIN / dia. [mm]	Handpiece-side coupling G / dia. [mm]	Dimensions dia. x length [mm]	Net weight [kg]	Item no.	Designation	Price/unit GBP
Flexible shaft inc. handpiece (HA 7 G22)							
25,000 – 11,000	10 / 30	22 / 22	18 x 1,654	1.536	86100509	BW 7 DIN10/G22	-
			18 x 2,154	1.986	86100529	BW 7 DIN10/G22 2M	-
Flexible shaft without handpiece							
25,000 – 11,000	10 / 30	22 / 22	18 x 1,589	1.250	86200509	BW 7 DIN10/G22 oHA	-
			18 x 2,089	1.700	86200529	BW 7 DIN10/G22 2M oHA	-
Replacement casing							
-	10 / 30	22 / 22	18 x 1,553	0.850	86200609	SCH 7 DIN10/G22	-
			18 x 2,053	1.100	86200629	SCH 7 DIN10/G22 2M	-

Continued on next page



Drive systems with DIN 10/DIN 15

Flexible shaft 7 and handpieces



Rotational speed range [RPM]	Drive-side coupling DIN / dia. [mm]	Handpiece-side coupling G / dia. [mm]	Dimensions dia. x length [mm]	Net weight [kg]	Item no.	Designation	Price/unit GBP
Replacement core							
25,000 – 11,000	10 / M10	22 / 5/3,85	7 x 1,589	0.400	86200309	SE 7 DIN10/G22	-
			7 x 2,089	0.600	86200329	SE 7 DIN10/G22 2M	-



HA 7 G22



WHA 7 90° G22

Handpieces

Handpieces with significantly better ergonomics.

Contents:

1 6 mm collet, 2 keys (1x EM SW 11 mm, 1x EM SW 14 mm).

Max. RPM	Handpiece-side coupling G / dia. [mm]	Dimensions dia. x length [mm]	Transmission ratio	Net weight [kg]	Item no.	Designation	Price/unit GBP
25,000	22 / 22	30 x 130	-	0.286	86200036	HA 7 G22	-
17,100	22 / 22	67 x 165	1:1	0.650	86300122	WHA 7 90° G22	-

Flexible shaft 10 and handpieces



BW 10



BW 10 oHA



SCH 10



SE 11

Flexible shaft 10 SE 11

The rotational speed should not fall below or exceed the specified range. The **radius of curvature must not be less than 170 mm**. After approximately 100 operating hours, the core of the flexible shaft must be re-lubricated.

Special features:

- Special lengths available on request.
- Cores and hoses with double-sided sliding coupling on request.

Rotational speed range [RPM]	Drive-side coupling DIN / dia. [mm]	Handpiece-side coupling G / dia. [mm]	Dimensions dia. x length [mm]	Net weight [kg]	Item no.	Designation	Price/unit GBP
Flexible shaft inc. handpiece (HA 10 G28)							
18,000 – 750	10 / 30	28 / 28	22 x 1,673	2.663	86101510	BW 10 SE 11 DIN10/G28	-
			22 x 2,173	3.113	86101511	BW 10 SE 11 DIN10/G28 2	-
	15 / 40	28 / 28	22 x 1,684	2.713	86100714	BW 10 SE 11 DIN 15/G28	-
Flexible shaft without handpiece							
18,000 – 750	10 / 30	28 / 28	22 x 1,600	2.232	86200516	BW 10 SE 11 DIN10/G28 oHA	-
			22 x 2,100	2.682	86200517	BW 10 SE 11 DIN10/G28 2M oHA	-
	15 / 40	28 / 28	22 x 1,611	2.282	86200714	BW 10 SE 11 DIN 15/G28 oHA	-
Replacement casing							
-	10 / 30	28 / 28	22 x 1,553	1.430	86200630	SCH 10 DIN10/G28	-
			22 x 2,053	1.580	86200631	SCH 10 DIN10/G28 2M	-
	15 / 40	28 / 28	22 x 1,570	1.430	86200614	SCH 10 DIN 15/G28	-
Replacement core							
18,000 – 750	10 / M10	28 / 7,5/5,85	11 x 1,600	0.802	87100951	SE 11 DIN10/G28	-
			11 x 2,100	1.102	87100133	SE 11 DIN10/G28 2M	-
	15 / M14	28 / 7,5/5,85	11 x 1,611	0.852	86200314	SE 11 DIN 15/G28	-



HA 10 G28

HA 12 G28



WHA 10 90° G28

Handpieces

Handpieces with significantly better ergonomics. Type HA 12 G28 with clamping nut for maximum clamping force and collets up to 12 mm available.

Contents:

HA 10 G28: 1 collet 6 mm, 2 keys
(1x EM SW 11 mm, 1x EM SW 15 mm).

HA 12 G28: 1 collet 6 mm, 2 keys
(1x DM SW 20/22 mm, 1x EM SW 14 mm).

WHA 10 90° G28: 1 collet 6 mm, 2 keys
(1x EM SW 11 mm, 1x EM SW 14 mm).

Max. RPM	Handpiece-side coupling G / dia. [mm]	Dimensions dia. x length [mm]	Transmission ratio	Net weight [kg]	Item no.	Designation	Price/unit GBP
18,000	28 / 28	35 x 160	-	0.431	86200037	HA 10 G28	-
		35 x 170	-	0.545	86200038	HA 12 G28	-
17,100	28 / 28	67 x 165	1:1	0.640	86300123	WHA 10 90° G28	-

Flexible shaft 12 and handpieces



BW 12



BW 12 oHA



SCH 12



SE 12

Flexible shaft 12

The rotational speed should not fall below or exceed the specified range. The **radius of curvature must not be less than 240 mm**. After approximately 100 operating hours, the core of the flexible shaft must be re-lubricated.

Special features:

- Special lengths available on request.
- Cores and hoses with double-sided sliding coupling on request.

Rotational speed range [RPM]	Drive-side coupling DIN / dia. [mm]	Handpiece-side coupling G / dia. [mm]	Dimensions dia. x length [mm]	Net weight [kg]	Item no.	Designation	Price/unit GBP
Flexible shaft inc. handpiece (HA 12 G28)							
12,000 – 850	10 / 30	28 / 28	25 x 2,173	4.295	86101512	BW 12 DIN10/G28	-
	15 / 40	28 / 28	25 x 2,183	4.345	86101513	BW 12 DIN15/G28	-
Flexible shaft without handpiece							
12,000 – 850	10 / 30	28 / 28	25 x 2,102	3.750	86200518	BW 12 DIN10/G28 oHA	-
	15 / 40	28 / 28	25 x 2,112	3.800	86200519	BW 12 DIN15/G28 oHA	-
Replacement casing							
-	10 / 30	28 / 28	25 x 2,045	2.450	86200633	SCH 12 DIN10/G28	-
	15 / 40	28 / 28	25 x 2,059	2.500	86200634	SCH 12 DIN15/G28	-
Replacement core							
12,000 – 850	10 / M10	28 / 7,5/5,85	12 x 2,102	1.300	86200333	SE 12 DIN10/G28	-
	15 / M14	28 / 7,5/5,85	12 x 2,112	1.300	86200334	SE 12 DIN15/G28	-

Drive systems with DIN 10/DIN 15

Flexible shaft 12 and handpieces



HA 10 G28

HA 12 G28



WHA 10 90° G28

Handpieces

Handpieces with significantly better ergonomics. Type HA 12 G 28 with clamping nut for maximum clamping force and collets up to 12 mm available.

Contents:

HA 10 G28: 1 collet 6 mm, 2 keys
(1x EM SW 11 mm, 1x EM SW 15 mm).

HA 12 G28: 1 collet 6 mm, 2 keys
(1x DM SW 20/22 mm, 1x EM SW 14 mm).

WHA 10 90° G28: 1 collet 6 mm, 2 keys
(1x EM SW 11 mm, 1x EM SW 14 mm).

Max. RPM	Handpiece-side coupling G / dia. [mm]	Dimensions dia. x length [mm]	Transmission ratio	Net weight [kg]	Item no.	Designation	Price/unit GBP
18,000	28 / 28	35 x 160	-	0.431	86200037	HA 10 G28	-
		35 x 170	-	0.545	86200038	HA 12 G28	-
17,100	28 / 28	67 x 165	1:1	0.640	86300123	WHA 10 90° G28	-

Remote switch for flexible shafts and accessories



FS-BW oHA



FS-SCH



SE

Remote switch for flexible shafts

Convenient operation from the workstation. Alternative to the foot switch. After approximately 100 operating hours, the core of the flexible shaft must be re-lubricated.

Special features:

- Switch on and off directly on the handpiece.
- Quick handpiece changing possible.

- Enhanced safety thanks to fast switch-off.

Rotational speed range [RPM]	Drive-side coupling DIN / dia. [mm]	Handpiece-side coupling G / dia. [mm]	Dimensions dia. x length [mm]	Net weight [kg]	Item no.	Designation	Price/unit GBP
Flexible shaft 7							
25,000 – 11,000	10 / 30	22 / 22	18 x 2,089	2.000	86200657	FS-BW 7 DIN10/G22 2M oHA	-
-	10 / 30	22 / 22	18 x 2,053	1.400	86200658	FS-SCH 7 DIN10/G22 2M	-
25,000 – 11,000	10 / M10	22 / 5/3,85	7 x 2,089	0.600	86200329	SE 7 DIN10/G22 2M	-
Flexible shaft 10							
18,000 – 750	10 / 30	28 / 28	22 x 2,100	3.012	86200659	FS-BW 10 SE 11 DIN10/G28 2M oHA	-
-	10 / 30	28 / 28	22 x 2,053	1.910	86200660	FS-SCH 10 DIN10/G28 2M	-
18,000 – 750	10 / M10	28 / 7,5/5,85	11 x 2,100	1.102	87100133	SE 11 DIN10/G28 2M	-
Flexible shaft 12							
12,000 – 850	10 / 30	28 / 28	25 x 2,102	4.080	86200661	FS-BW 12 DIN10/G28 2M oHA	-
-	10 / 30	28 / 28	25 x 2,045	2.780	86200662	FS-SCH 12 DIN10/G28 2M	-
12,000 – 850	10 / M10	28 / 7,5/5,85	12 x 2,102	1.300	86200333	SE 12 DIN10/G28	-





BW 4 PST-T
BW 7 PST-T



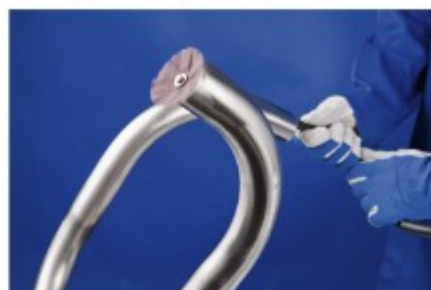
SE 4 PST-T
SE 7 PST-T



SCH 4 PST-T
SCH 7 PST-T

Flexible shaft 4 PST-T | Flexible shaft 7 PST-T

The POLISTAR-TUBE grinding tools are attached directly to the core of the special flexible shaft. After approximately 100 operating hours, the core of the flexible shaft must be re-lubricated.



Special features:

- Excellent for gradual fine grinding and cleaning of inner surfaces of pipes and pipe bends.
- Both pipe bend ends can be deburred from the entry side.
- The special flexible shafts do not have a handpiece for tool mounting and are particularly flexible in the front section.

Rotational speed range [RPM]	Drive-side coupling DIN / dia. [mm]	Dimensions dia. x length [mm]	Fastening thread	Tool mounting [mm]	Net weight [kg]	Item no.	Designation	Price/unit GBP
Flexible shaft								
7,650 – 1,500	10 / 30	13 x 1,537	M4	4	0.480	87101801	BW 4 PST-T DIN 10/M4 1,5 m	-
4,250 – 1,500	10 / 30	18 x 2,032	M5	5	1.320	87101804	BW 7 PST-T DIN 10/M5 2 m	-
Pre-assembled replacement core								
7,650 – 1,500	10 / M10	4 x 1,528	M4	4	0.124	87101802	SE 4 PST-T DIN10/M4 1,5 m	-
4,250 – 1,500	10 / M10	7 x 2,031	M5	5	0.447	87101805	SE 7 PST-T DIN 10/M5 2 m	-
Pre-assembled replacement casing								
-	10 / 30	13 x 1,537	-	-	0.353	87101803	SCH 4 PST-T DIN 10/M4 1,5 m	-
-	-	18 x 2,032	-	-	0.871	87101806	SCH 7 PST-T DIN 10/M5 2 m	-



AD M4/8-32 UNC
AD M5/8-32 UNC



FLS M4
FLS M5

Accessories for flexible shafts BW 4 PST-T, 7 PST-T

Thread adapters AD M4/8-32 UNC and AD M5/8-32 UNC, flange screws FLS M4 and FLS M5 and keys EM SW 7 mm and EM SW 8 mm.



EM SW 7 mm
EM SW 8 mm

Tool mounting [mm]	Net weight [kg]		Item no.	Designation	Price/unit GBP
Suitable for BW 4 PST-T					
8-32 UNC	0.002	1	87101500	AD M4/8-32 UNC	-
4	0.002	1	87200221	FLS M4	-
-	0.008	1	90001914	EM SW 7 mm	-
Suitable for BW 7 PST-T					
8-32 UNC	0.003	1	87101501	AD M5/8-32 UNC	-
5	0.003	1	87200222	FLS M5	-
-	0.014	1	93785706	EM SW 8 mm G	-

Drive systems with DIN 10/DIN 15

Handpieces and accessories



Handpieces

Straight handpieces and angle handpieces with much better ergonomics. Type HA 12 G28 with clamping nut for maximum clamping force and collets up to 12 mm available.

Contents:

HA 4 G16: 1 collet 6 mm, 2 keys
(1x EM SW 11 mm, 1x EM SW 12 mm).
HA 7 G22: 1 collet 6 mm, 2 keys
(1x EM SW 11 mm, 1x EM SW 14 mm).
HA 10 G28: 1 collet 6 mm, 2 keys
(1x EM SW 11 mm, 1x EM SW 15 mm).
HA 12 G28: 1 collet 6 mm, 2 keys
(1x DM SW 20/22 mm, 1x EM SW 14 mm).
WHA 4 90° G16: 1 collet 6 mm, 2 keys
(1x EM SW 11 mm, 1x EM SW 14 mm).

WHA 7 90° G22: 1 collet 6 mm, 2 keys
(1x EM SW 11 mm, 1x EM SW 14 mm).
WHA 10 90° G28: 1 collet 6 mm, 2 keys
(1x EM SW 11 mm, 1x EM SW 14 mm).

Max. RPM	Handpiece-side coupling G / dia. [mm]	Dimensions dia. x length [mm]	Transmission ratio	Net weight [kg]	Item no.	Designation	Price/unit GBP
Straight handpieces							
40,000	16 / 16	24 x 120	-	0.180	86200035	HA 4 G16	-
25,000	22 / 22	30 x 130	-	0.286	86200036	HA 7 G22	-
18,000	28 / 28	35 x 160	-	0.431	86200037	HA 10 G28	-
		35 x 170	-	0.545	86200038	HA 12 G28	-
Angle handpieces							
20,000	16 / 16	70 x 120	1,8:1	0.304	86300121	WHA 4 90° G16	-
17,100	22 / 22	67 x 165	1:1	0.650	86300122	WHA 7 90° G22	-
	28 / 28	67 x 165	1:1	0.640	86300123	WHA 10 90° G28	-



Handpieces DPF/SRF

All handpieces have a handpiece-side coupling DPF/SRF. Type WZT comes with a telescopic system.



Max. RPM	Handpiece-side coupling G / dia. [mm]	Dimensions dia. x length [mm]	Transmission ratio	Net weight [kg]	Item no.	Designation	Price/unit GBP
Straight handpieces							
18,000	DPF/SRF / 10	24 x 140	-	0.131	86210100	HA 6 Z DPF/SRF	-
		22 x 139	-	0.109	86210110	HA 6 Z SP 3.0 DPF/SRF	-

Continued on next page

Max. RPM	Handpiece-side coupling G / dia. [mm]	Dimensions dia. x length [mm]	Transmission ratio	Net weight [kg]	Item no.	Designation	Price/unit GBP
Angle handpieces							
18,000	DPF/SRF / 10	50 x 170	1,25:1	0.225	86210120	WZ 6 DPF/SRF	-
Angle handpieces with telescopic system							
18,000	DPF/SRF / 10	35 x 170	1,38:1	0.170	86210130	WZT 6 3.0 DPF/SRF	-
		45 x 200	1,53:1	0.210	86210140	WZT 6 45° 6.0 DPF/SRF	-

Angle drives and accessories



Angle drive WT 10 G28

Can be connected to all flexible shafts with G28 connection (instead of the handpiece). Connection to flexible shaft can be pivoted 360°. With M14 spindle thread and 22.23 mm tool mounting.

Contents:

1 clamping nut, 2 flange screws, 2 spacer sleeves, 2 keys (1x SKS SW 4 mm, 1x STL SW 35 x 5 mm), anti-vibration handle, guard dia. 125 mm.

Special features:

- Enables flexible shaft drives to be used as angle grinders.

Drive operating speed n max. [RPM]	Transmission ratio	Output speed at n max. [RPM]	Net weight [kg]	Item no.	Designation	Price/unit GBP
18,000	1,53:1	12,000	1.438	86300621	WT 10 G28	-



Burnishing angle drive SWT 10 G28

Can be connected to all flexible shafts with G28 connection (instead of the handpiece). Connection to flexible shaft can be pivoted 360°. With M14 spindle thread and tool mounting dia. x width 19 x 100 mm.

Contents:

Hand guard, anti-vibration handle, detachable drive spindle.

Special features:

- Enables flexible shaft drives to be used as burnishing machines.

Drive operating speed n max. [RPM]	Transmission ratio	Output speed at n max. [RPM]	Net weight [kg]	Item no.	Designation	Price/unit GBP
18,000	1,53:1	12,000	1.901	87101531	SWT 10 G28	-



Drive systems with DIN 10/DIN 15

Belt sanders



BSG 10/35 E G28

BSG 10/50 E G28

BSG 10/35 E G28 | BSG 10/50 E G28

Belt sander with a belt length of 450 mm x width 35 mm as type BSG 10/35 E G28 and width 50 mm as type BSG 10/50 E G28.

Contents:

1 key (SKST SW 17 mm).

Special features:

■ Elastically mounted spindle.

■ Can be connected to flexible shafts without handpiece.

■ Matching belts for BSG 10/35 E G28:

BA 35/450, VB 35/450;

Matching belts for BSG 10/50 E G28:

BA 50/450, VB 50/450

Max. RPM	Matches flexible shafts of types	Matches handpiece-side flexible shaft coupling G/dia. [mm]	Dimensions L x W x H [mm]	Net weight [kg]	Item no.	Designation	Price/unit GBP
7,000	BW 10, BW 12	28 / 28	180 x 35 x 180	1.500	86400160	BSG 10/35 E G28	-
			180 x 50 x 195	1.580	86400156	BSG 10/50 E G28	-



ATR



ULR

Replacement rollers for belt sanders

Guide rollers ULR BSG 10/35 E and ULR BSG 10/50 E, drive rollers ATR BSG 10/35 E and ATR BSG 10/50 E and soft drive rollers ATR-W BSG 10/35 E and ATR-W BSG 10/50 E.

Description	D [mm]	T [mm]	Suitable for belt sanders	Net weight [kg]	Item no.	Designation	Price/unit GBP
Guide roller	50	30	BSG 10/35 E G28	0.125	86400161	ULR BSG 10/35 E	-
Drive roller	100	30	BSG 10/35 E G28	0.250	86400162	ATR BSG 10/35 E	-
Drive roller, soft	100	30	BSG 10/35 E G28	0.250	86400170	ATR-W BSG 10/35 E	-
Guide roller	50	40	BSG 10/50 E G28	0.145	86400157	ULR BSG 10/50 E	-
Drive roller	100	40	BSG 10/50 E G28	0.300	86400146	ATR BSG 10/50 E	-
Drive roller, soft	100	40	BSG 10/50 E G28	0.300	86400171	ATR-W BSG 10/50 E	-





Handpieces for rigid extensions

When combined with air-power and steplessly speed-adjustable electric motors, the ideal solution for applications in hard-to-access workpieces, e.g. during cleaning or milling work. Can be adapted to the workpiece geometry.



HA 7 G22 STV: 2 keys (1x EM SW 11 mm, 1x EM SW 14 mm), 1 collet 6 mm.

HA 10 G28 STV: 2 keys (1x EM SW 11 mm, 1x EM SW 15 mm), 1 collet 6 mm.

HA 12 G28 STV: 2 keys (DM SW 20/22 mm), 1 collet 6 mm.

WHA 7 90° G22 STV: 2 keys (1x EM SW 11 mm, 1x EM SW 14 mm), 1 collet 6 mm.

WHA 10 90° G28 STV: 2 keys (1x EM SW 11 mm, 1x EM SW 14 mm), 1 collet 6 mm.

Contents:

HA 4 G16/G22 STV: 2 keys (1x EM SW 11 mm, 1x EM SW 12 mm), 1 collet 6 mm.

Special features:

- New generation of handpieces with significantly better ergonomics.

Max. RPM	Handpiece-side coupling G / dia. [mm]	Dimensions dia. x length [mm]	Transmission ratio	Collet group	Net weight [kg]	Item no.	Designation	Price/unit GBP
Straight handpieces								
25,000	16 / 22	20 x 120	-	6	0.135	86200039	HA 4 G16/G22 STV	-
	22 / 22	27 x 130	-	6	0.259	86200040	HA 7 G22 STV	-
18,000	28 / 28	33 x 160	-	6	0.396	86200041	HA 10 G28 STV	-
	28 / 28	33 x 170	-	12	0.512	86200042	HA 12 G28 STV	-
Angle handpieces								
17,100	22 / 22	67 x 165	1:1	6	0.520	86300131	WHA 7 90° G22 STV	-
	28 / 28	67 x 165	1:1	6	0.579	86300132	WHA 10 90° G28 STV	-

Drive systems with DIN 10/DIN 15

Rigid extensions STV



Rigid extensions DIN 10

Rigid extensions **with max. 25,000 RPM** (types STV9 and STV13) for hard-to-reach areas. No risk of overloading the drive motor when used in conjunction with DL motors. Types DA 27 and DA 33 with shortest extension.

Contents:

STV9: 3 mm collet, 3 keys
(2x DM SW 6/7 mm, 1x SKS 4 mm).
STV13: 6 mm collet, 3 keys
(2x DM SW 9/11 mm, 1x SKS 4 mm).
STV20 incl. HA 4 G16/G22 STV: 6 mm collet,
2 keys (1x EM SW 11 mm, 1x EM SW 12 mm).

■ Bent types available as from a minimum length of 500 mm (see 1st and 5th figure).

Special features:

- Special lengths and options for workpiece adaptation available on request.
- The potential bending point and the bending radius depend on the STV type and the desired bend.

Sliding coupling [G]	Dimensions dia. x length [mm]	max. bending radius [mm]	Matching tool mounting/handpiece	Net weight [kg]	Item no.	Designation	Price/unit GBP
Rigid extensions							
-	9 x 300	150	Collet group 2	0.430	80900330	STV9 L300	-
	9 x 500	150	Collet group 2	0.520	80900335	STV9 L500	-
	9 x 800	150	Collet group 2	0.640	80900340	STV9 L800	-
	9 x 1,000	150	Collet group 2	0.720	80900345	STV9 L1000	-
	13 x 300	150	Collet group 10	0.520	80900218	STV13 L300	-
	13 x 500	150	Collet group 10	0.670	80900232	STV13 L500	-
	13 x 800	150	Collet group 10	0.890	80900305	STV13 L800	-
	13 x 1,000	150	Collet group 10	1.040	80900310	STV13 L1000	-
16/22	20 x 200	-	HA 4 G16/G22 STV	0.400	80900351	STV20 L 200	-
	20 x 400	-	HA 4 G16/G22 STV	0.630	80900352	STV20 L 400	-
	20 x 600	150	HA 4 G16/G22 STV	0.890	80900353	STV20 L 600	-
22	27 x 250	-	HA 7 G22 STV, WHA 7 G22 STV	0.550	80900354	STV27 L 250	-
	27 x 500	250	HA 7 G22 STV, WHA 7 G22 STV	0.930	80900355	STV27 L 500	-
28	33 x 250	-	HA 10 G28 STV, HA 12 G28 STV, WHA 10 G28 STV	1.025	80900356	STV33 L 250	-
	33 x 500	300	HA 10 G28 STV, HA 12 G28 STV, WHA 10 G28 STV	2.100	80900357	STV33 L 500	-
	33 x 1,000	300	HA 10 G28 STV, HA 12 G28 STV, WHA 10 G28 STV	3.250	80900358	STV33 L 1000	-
Direct connection and replacement core							
22	30 x 90	-	HA 7 G22 STV, WHA 7 G22 STV	0.204	87100623	DA 27 DIN10/G22	-
28	30 x 100	-	HA 10 G28 STV, HA 12 G28 STV, WHA 10 G28 STV	0.305	80900029	DA 33 DIN10/G28	-
22	7 x 125	-	-	0.035	80900244	SE DA 27 DIN10/G22	-
28	12 x 153	-	-	0.107	80900088	SE DA 33 DIN10/G28	-




BWA G22/DIN 10



BWA G28/DIN 10

Flexible shaft adapter

The flexible shaft adapter conveniently connects rigid extensions and flexible shafts.

Net weight [kg]		Item no.	Designation	Price/unit GBP
0.285	1	86300307	BWA G22/DIN 10	-
0.563	1	86300308	BWA G28/DIN 10	-

DL motors DIN 10 for rigid extensions

PMA 4/220 HV | PMA 4/120 HV



Air-power motor with exhaust directed to the rear and dead man's switch using safety lever valve for rigid extensions with DIN 10 motor connection. 4/120 HV type with constant power delivery due to the centrifugal governor.

Contents:

1 m exhaust hose and 2.5 m air supply hose with 1/4" male threaded connection, threaded quick coupling (STG), 2 keys (STS D 4 mm).

Special features:

- Very powerful with a compact design.
- This grinder can also be operated without oil; however, this will lead to a shorter service life and reduced rotational speed.

RPM	Power output [watts]	Air consumption at idle [m³/min]	Air consumption under load [m³/min]	Connection coupling [DIN]	Air supply hose internal dia. [mm]	Dimensions L x W x H [mm]	Net weight [kg]	Item no.	Designation	Price/unit GBP
22,000	440	0.98	0.87	10	8	215 x 39 x 39	0.913	80703306	PMA 4/220 HV	-
12,000	370	0.5	0.87	10	8	240 x 39 x 39	0.995	80703307	PMA 4/120 HV	-

PMA 10/200 HV | PMA 10/160 HV | PMA 10/120 HV



Powerful air-power motor with exhaust directed to the rear and dead man's switch using safety lever valve for rigid extensions with motor connection DIN 10.

Contents:

1 m exhaust hose and 2.5 m air supply hose with 1/2" male threaded connection, 2 keys (STS D 4 mm).

Special features:

- 10/160 HV and 10/120 HV types with constant power delivery due to the centrifugal governor.

RPM	Power output [watts]	Air consumption at idle [m³/min]	Air consumption under load [m³/min]	Connection coupling [DIN]	Air supply hose internal dia. [mm]	Dimensions L x W x H [mm]	Net weight [kg]	Item no.	Designation	Price/unit GBP
20,000	1,000	1.38	1.1	10	13	283 x 46 x 46	1.200	80703135	PMA 10/200 HV	-
16,000	1,000	0.7	0.9	10	13	283 x 46 x 46	1.200	80703140	PMA 10/160 HV	-
12,000	950	0.5	0.9	10	13	283 x 46 x 46	1.200	80703150	PMA 10/120 HV	-

Drive systems with DIN 10/DIN 15

EL motors DIN 10 for rigid extensions



EMER 8/280 | EMER 8/90

Electric motor for rigid extensions with DIN 10 motor connection. With stepless rotational speed control and digital electronics for constant rotational speed.

Contents:

4 m power cable, 2 keys (STS D 4 mm).

Special features:

- Overload protection.
- Smooth start-up to protect people, tools and the drive.

Rotational speed [RPM]	Power consumption [watts]	Power output [watts]	Voltage [volts] 50–60 Hz	Connection [DIN]	Dimensions L x W x H [mm]	Net weight [kg]	Item no.	Designation	Price/unit GBP
28,000 – 8,500	750	410	230	10	430 x 77 x 77	2.030	83700330	EMER 8/280	-
9,000 – 2,500	710	410	230	10	430 x 77 x 77	2.030	83700340	EMER 8/90	-





Extensions for drive spindles, metric version

Allow access to difficult-to-reach areas and are clamped into the collet of the machine (air or electric grinder) or into the flexible shaft handpiece.

Special features:

- Cost-effective alternative to customized burrs and mounted points with long shanks.

Max. RPM	Shank mounting dia. S [mm]	Tool mounting [mm]	Total length L ₁ [mm]	Mounting pin length L ₂ [mm]	Max. spindle dia. D [mm]	Incl. collet dia. [mm]	Collet group	Net weight [kg]	Item no.	Designation	Price/ unit GBP
44,000	6	3	76	30	9.5	3	14	0.028	87100359	SPV 50-3 S6	-
	8	3	78	30	9.5	3	14	0.035	87100356	SPV 50-3 S8	-
20,000	SPG6	6	104	Special	12	6	10	0.073	87100728	SPV 75-6 SPG6	-
	6	6	58	18	12	6	10	0.025	87100069	SPV 36-6 S6	-
	8	6	95	30	12	6	10	0.055	87100365	SPV 50-6 S8	-
			120	30	12	6	10	0.076	87100358	SPV 75-6 S8	-
	SPG6		129	Special	12	6	10	0.096	87101237	SPV 100-6 SPG6	-
	8	6	144	30	12	6	10	0.100	87100357	SPV 100-6 S8	-
10,000	6	3	150	30	11.5	-	-	0.055	87100362	SPV 150-3 S6	-
	8	6	150	30	13.5	-	-	0.082	87100363	SPV 150-6 S8	-
		8	150	30	15.9	-	-	0.110	87100134	SPV 150-8 S8	-



Extensions for drive spindles, imperial version

Allow access to difficult-to-reach areas and are clamped into the collet of the machine (air or electric grinder) or into the flexible shaft handpiece.

Special features:

- Cost-effective alternative to customized burrs and mounted points with long shanks.

Max. RPM	Shank mounting dia. S [inch]	Tool mounting [inch]	Total length L ₁ [inch]	Mounting pin length L ₂ [inch]	Max. spindle dia. D [inch]	Incl. collet dia. [mm]	Collet group	Net weight [kg]	Item no.	Designation	Price/ unit GBP
44,000	1/4	1/8	3,07	1,18	0.37	1/8	14	0.028	89912000	SPV 50-1/8 S1/4	-
20,000	SPG6	1/4	4,09	Spezial	0.47	1/4	10	0.073	89912001	SPV 75-1/4 SPG6	-
	3/8	1/4	4,72	1,18	0.47	1/4	10	0.077	89912002	SPV 75-1/4 S3/8	-
	SPG6	1/4	5,08	Spezial	0.47	1/4	10	0.096	89912003	SPV 100-1/4 SPG6	-

Continued on next page



Max. RPM	Shank mounting dia. S [inch]	Tool mounting [inch]	Total length L ₁ [inch]	Mounting pin length L ₂ [inch]	Max. spindle dia. D [inch]	Incl. collet dia. [mm]	Collet group	Net weight [kg]	Item no.	Designation	Price/unit GBP
20,000	3/8	1/4	5,67	1,18	0.47	1/4	10	0.100	89912004	SPV 100-1/4 S3/8	-
10,000	1/4	1/8	5,91	1,18	0.45	-	-	0.055	89912005	SPV 150-1/8 S1/4	-
	3/8	1/4	5,91	1,18	0.53	-	-	0.082	89912006	SPV 150-1/4 S3/8	-



Extensions for drive spindles

Allows access to difficult-to-reach areas and particularly deep cores. They are clamped into the collet of the machine (air or electric grinder) or into the flexible shaft handpiece. They must also be guided by hand.

Contents:

Included in delivery: 2 keys
(2x DM SW 6/7 mm or 2x DM SW 9/11 mm).

Special features:

- The extension is only suitable for manual applications.
- Cost-effective alternative to customized burrs and mounted points with long shanks.

Max. RPM	Shank mounting dia. S [mm]	Tool mounting [mm]	Total length L ₁ [mm]	Mounting pin length L ₂ [mm]	Max. spindle dia. D [mm]	Incl. collet dia. [mm]	Collet group	Net weight [kg]	Item no.	Designation	Price/unit GBP
25,000	6	3	406	28	9	3	2	0.130	87101310	SPVH9 L300-3 S6	-
			606	28	9	3	2	0.340	87101457	SPVH9 L500-3 S6	-
			906	28	9	3	2	0.520	87101502	SPVH9 L800-3 S6	-
			1,106	28	9	3	2	0.640	87101504	SPVH9 L1000-3 S6	-
	8	6	406	28	13	6	10	0.320	87101503	SPVH13 L300-6 S6	-
			606	28	13	6	10	0.502	87101280	SPVH13 L500-6 S8	-
			906	28	13	6	10	0.770	87101506	SPVH13 L800-6 S6	-
			1,106	28	13	6	10	0.950	87101309	SPVH13 L1000-6 S6	-
	6	6	406	28	13	6	10	0.322	87101289	SPVH13 L300-6 S8	-
			606	28	13	6	10	0.500	87101429	SPVH13 L500-6 S6	-
			906	28	13	6	10	0.772	87101290	SPVH13 L800-6 S8	-
			1,106	28	13	6	10	0.952	87101372	SPVH13 L1000-6 S8	-

Collets



Collets

Depending on the PFERD tool selected, different collets are available. Matching collets are allocated to every drive.

Diameter [mm]	Diameter [inch]	Net weight [kg]	Item no.	Designation	Price/unit GBP
Collet group 1					
2.34	-	0.002	91491301	SPZ 914.913.01 (2,34 mm)	-
3	-	0.002	91491302	SPZ 914.913.02 (3 mm)	-
-	3/32	0.002	91491307	SPZ 914.913.07 (3/32")	-
-	1/8	0.002	91491303	SPZ 914.913.03 (1/8")	-
Collet group 2					
2.34	-	0.001	94701604	SPZ 947.016.04 (2,34 mm)	-
3	-	0.001	94701601	SPZ 947.016.01 (3 mm)	-
-	3/32	0.001	94701603	SPZ 947.016.03 (3/32")	-
-	1/8	0.001	94701602	SPZ 947.016.02 (1/8")	-

Continued on next page

Diameter [mm]	Diameter [inch]	Net weight [kg]	Item no.	Designation	Price/unit GBP
Collet group 3					
3	-	0.003	90000273	SPZ 900.002.73 (3 mm)	-
-	1/8	0.003	90000282	SPZ 900.002.82 (1/8")	-
Collet group 4					
3	-	0.005	95771703	SPZ 957.717.03 (3 mm)	-
6	-	0.003	95771701	SPZ 957.717.01 (6 mm)	-
-	1/8	0.005	95771704	SPZ 957.717.04 (1/8")	-
-	1/4	0.003	95771702	SPZ 957.717.02 (1/4")	-
Collet group 5					
3	1/8	-	90000339	SPZ 900.003.39 (3 mm, 1/8")	-
6	-	0.003	90000340	SPZ 900.003.40 (6 mm)	-
-	1/4	0.004	90000301	SPZ 900.003.01 (1/4")	-
Collet group 6					
3	-	0.014	95032503	SPZ 950.325.03 (3 mm)	-
5	-	0.012	95032506	SPZ 950.325.06 (5 mm)	-
6	-	0.012	95032501	SPZ 950.325.01 (6 mm)	-
8	-	0.007	95032517	SPZ 950.325.17 (8 mm)	-
-	3/32	0.007	95032516	SPZ 950.325.16 (3/32")	-
-	1/8	0.013	95032504	SPZ 950.325.04 (1/8")	-
-	1/4	0.012	95032502	SPZ 950.325.02 (1/4")	-
Collet group 7					
3	1/8	0.015	90000145	SPZ 900.001.45 (3 mm, 1/8")	-
6	-	0.015	90000123	SPZ 900.001.23 (6 mm)	-
8	-	0.015	90000143	SPZ 900.001.43 (8 mm)	-
-	1/4	0.015	90000144	SPZ 900.001.44 (1/4")	-
-	3/8	0.015	90000100	SPZ 900.001.00 (3/8")	-
Collet group 8					
6	-	0.026	95203402	SPZ 952.034.02 (6 mm)	-
8	-	0.026	95203405	SPZ 952.034.05 (8 mm)	-
10	-	0.026	95203407	SPZ 952.034.07 (10 mm)	-
-	1/4	0.026	95203403	SPZ 952.034.03 (1/4")	-
-	3/8	0.021	95203409	SPZ 952.034.09 (3/8")	-
Collet group 9					
2.34	3/32	0.010	91490009	SPZ 914.900.09 (2,34 mm, 3/32")	-
3	-	0.010	91490011	SPZ 914.900.11 (3 mm)	-
5	-	0.008	91490016	SPZ 914.900.16 (5 mm)	-
6	-	0.008	91490018	SPZ 914.900.18 (6 mm)	-
-	1/8	0.010	91490019	SPZ 914.900.19 (1/8")	-
-	1/4	0.008	91490020	SPZ 914.900.20 (1/4")	-
Collet group 10					
3	-	0.006	95766301	SPZ 957.663.01 (3 mm)	-
5	-	0.006	95766304	SPZ 957.663.04 (5 mm)	-
6	-	0.006	95766303	SPZ 957.663.03 (6 mm)	-
-	1/8	0.006	95766302	SPZ 957.663.02 (1/8")	-
-	1/4	0.006	95766351	SPZ 957.663.51 (1/4")	-
Collet group 11					
2.34	3/32	0.017	91490909	SPZ 914.909.09 (2,34 mm, 3/32")	-
3	-	0.017	91490912	SPZ 914.909.12 (3 mm)	-
5	-	0.017	91490917	SPZ 914.909.17 (5 mm)	-
6	-	0.015	91490919	SPZ 914.909.19 (6 mm)	-
8	-	0.010	91490923	SPZ 914.909.23 (8 mm)	-
-	1/8	0.017	91490927	SPZ 914.909.27 (1/8")	-

Continued on next page



Diameter [mm]	Diameter [inch]	Net weight [kg]	Item no.	Designation	Price/unit GBP
-	1/4	0.013	91490926	SPZ 914.909.26 (1/4")	-
Collet group 12					
5	-	0.035	91490203	SPZ 914.902.03 (5 mm)	-
6	-	0.036	91490204	SPZ 914.902.04 (6 mm)	-
8	-	0.034	91490206	SPZ 914.902.06 (8 mm)	-
10	-	0.028	91490208	SPZ 914.902.08 (10 mm)	-
12	-	0.024	91490209	SPZ 914.902.09 (12 mm)	-
-	1/4	0.037	91490210	SPZ 914.902.10 (1/4")	-
-	3/8	0.030	91490211	SPZ 914.902.11 (3/8")	-
Collet group 13					
2.34	3/32	0.006	90101823	SPZ 901.018.23 (2,34 mm, 3/32")	-
3	-	0.006	90101830	SPZ 901.018.30 (3 mm)	-
5	-	0.006	90101850	SPZ 901.018.50 (5 mm)	-
6	-	0.006	90101860	SPZ 901.018.60 (6 mm)	-
-	1/8	0.006	90101818	SPZ 901.018.18 (1/8")	-
-	1/4	0.006	90101814	SPZ 901.018.14 (1/4")	-
Collet group 14					
2.34	3/32	0.003	90110423	SPZ 901.104.23 (2,34 mm, 3/32")	-
3	-	0.003	90110430	SPZ 901.104.30 (3 mm)	-
-	1/8	0.003	90110418	SPZ 901.104.18 (1/8")	-
Collet group 15					
3	-	0.018	98980000	SPZ 989.800.00 (3 mm)	-
-	3/32	0.002	98980002	SPZ 989.800.02 (3/32")	-
-	1/8	0.002	98980001	SPZ 989.800.01 (1/8")	-
Collet group 16					
3	-	0.010	98980268	SPZ 989.802.68 (3 mm)	-
6	-	0.018	98980163	SPZ 989.801.63 (6 mm)	-
8	-	0.018	98980164	SPZ 989.801.64 (8 mm)	-
10	-	0.018	98980165	SPZ 989.801.65 (10 mm)	-
12	-	0.034	98980269	SPZ 989.802.69 (12 mm)	-
-	1/4	0.018	98980166	SPZ 989.801.66 (1/4")	-
Collet group 20					
3	-	0.008	98980262	SPZ 989.802.62 (3 mm)	-
6	-	0.018	98980261	SPZ 989.802.61 (6 mm)	-
8	-	0.021	98980263	SPZ 989.802.63 (8 mm)	-
10	-	0.028	98980264	SPZ 989.802.64 (10 mm)	-
-	1/4	0.018	98980265	SPZ 989.802.65 (1/4")	-
Collet group 21					
3	-	0.010	98980311	SPZ 989.803.11 (3 mm)	-
6	-	0.020	98980310	SPZ 989.803.10 (6 mm)	-
-	1/8	-	98980398	SPZ 989.803.98 (1/8")	-
-	1/4	-	98980399	SPZ 989.803.99 (1/4")	-
Collet group 22					
3	-	0.024	98960171	SPZ 989.601.71 (3 mm)	-
6	-	0.024	98960172	SPZ 989.601.72 (6 mm)	-
8	-	0.021	98960173	SPZ 989.601.73 (8 mm)	-
-	1/4	0.024	98960170	SPZ 989.601.70 (1/4")	-
Collet group 23					
3	-	0.018	98980660	SPZ 989.806.60 (3 mm)	-
-	3/32	0.018	98980661	SPZ 989.806.61 (3/32")	-
-	1/8	0.018	98980662	SPZ 989.806.62 (1/8")	-

Continued on next page

Diameter [mm]	Diameter [inch]	Net weight [kg]	Item no.	Designation	Price/unit GBP
Collet group 17					
2.35	-	0.002	90014051	SPZ 900.140.51 (2,35 mm)	-
3	-	0.002	90014050	SPZ 900.140.50 (3 mm)	-
-	1/8	0.002	90014052	SPZ 900.140.52 (1/8")	-
Collet group 18					
2.35	-	0.001	90014061	SPZ 900.140.61 (2,35 mm)	-
3	-	0.001	90014060	SPZ 900.140.60 (3 mm)	-
-	1/8	0.001	90014062	SPZ 900.140.62 (1/8")	-
Collet group 19					
2.35	-	0.011	90014073	SPZ 900.140.73 (2,35 mm)	-
3	-	0.011	90014071	SPZ 900.140.71 (3 mm)	-
6	-	0.007	90014070	SPZ 900.140.70 (6 mm)	-
-	1/8	0.011	90014072	SPZ 900.140.72 (1/8")	-
-	1/4	0.008	90014074	SPZ 900.140.74 (1/4")	-

Reducing collets and adapter



RZH 63
RZH 6234
RZH 64



AF M5 CD 1/4-20UNC

Reducing collets and adapter

These reducing collets fit into an existing collet for 6 mm shank tools and are used as adapters for 2.34 mm, 3 mm or 4 mm shank tools.

Reducing shank holder	Suitable for	Net weight [kg]	Item no.	Designation	Price/unit GBP
from 6 mm to 2.34 mm diameter	-	0.004	87100153	RZH 6234	-
from 6 mm to 3 mm diameter	-	0.004	87100162	RZH 63	-
Dia. from 6 mm to 4 mm	-	0.004	87101375	RZH 64	-
-	Cordless angle grinder with SBH/SBHR 20, 25, 38, 50	0.006	84205030	AF M5 CD 1/4-20 UNC	-

Arbor



BO SPG 6/6 0-10



BO SPG 6/10 0-10

Arbor

Arbor BO SPG 6/6 0-10 and BO SPG 6/10 0-10. Please refer to catalogue section 4 and catalogue section 8 for more versions.

Shank holder	Tool mounting dia. [mm]	Suitable for [mm]	Net weight [kg]	Item no.	Designation	Price/unit GBP
SPG6	Dia. 10 x 0 – 10	All drives with SPG6	0.035	80810012	BO SPG 6/10 0-10	-
	Dia. 6 x 0 – 10	All drives with SPG6	0.035	80810011	BO SPG 6/6 0-10	-




Accessories for tool drives

Key



Key

PFERD offers different keys with different widths across flats (SW).

Net weight [kg]		Item no.	Designation	Price/unit GBP
0.003	1	98980670	SKS size 2,5 mm	-
0.004	1	90200021	SKS SW 2,5 mm	-
0.005	1	92785501	SKS SW 3 mm	-
0.006	1	92785502	SKS SW 4 mm	-
0.018	1	92785503	SKS SW 5 mm	-
0.008	1	90001869	SKS SW 5/32"	-
0.059	1	87200313	SKHS size 5 mm	-
0.073	1	91243601	SKST size 17 mm	-
0.008	1	90001914	EM SW 7 mm	-
0.014	1	93785706	EM SW 8 mm G	-
0.023	1	95770101	EM SW 9 mm	-
0.026	1	90000299	EM SW 10 mm	-
0.025	1	93785701	EM SW 11 mm	-
0.027	1	98980322	EM SW 12 mm	-
0.061	1	98960042	EM SW 13 mm	-
0.038	1	93785703	EM SW 14 mm	-
0.048	1	98980561	EM size 15 mm	-
0.062	1	92785611	EM SW 17 mm	-
0.102	1	93785705	EM SW 22 mm	-
0.015	1	90000122	EM SW 3/4"	-
0.040	1	90000377	EM SW 7/16"	-
0.010	1	90000121	EM SW 9/16"	-
0.022	1	90000274	EM SW 13/64"	-
0.005	1	90014010	DM SW 4/4 mm	-
0.025	1	98980010	DM SW 6/8 mm	-
0.020	1	90014004	DM SW 10/10 mm	-
0.149	1	98980190	DM SW 20/22 mm	-
0.122	1	91244601	STL SW 35x5 mm	-
0.048	1	98960182	STL SW 35x5,3 mm	-
0.095	1	87200281	HS 40-42	-
0.006	1	92792301	STS D 2,5 mm	-
0.015	1	92792302	STS D 4 mm	-
0.034	1	92792303	STS D 6 mm	-
0.053	1	87200263	SDR TX 15K	-
0.032	1	90014003	MIM ARH	-
0.022	1	90014008	MIM SPS DK D 7	-
0.040	1	90014009	MIM ARS HA D 23,5	-
0.004	1	90014011	MIM DSTS SW 11xD 2,4 mm	-





Lubricants and maintenance sets

Special lubricating oil for air-powered devices with oil mist lubrication. Special grease FT 5 for re-greasing angle heads. Flexible shaft grease FT 4 for flexible shafts. Maintenance set P-Set with 1 hose brush and 2 non-linting cleaning cloths.



Contents	Use for	Net weight [kg]	Item no.	Designation	Price/unit GBP
Special lubricating oil 5 L	Oil mist device	4.900	80900013	5 L LONG OEL	-
Special lubricating oil 1 L	Oil mist device	0.990	80900014	1 L LONG OEL	-
Special grease 100 g	Ball bearing, angle head	0.100	84900498	FT 5	-
Flexible shaft grease 450 g	Flexible shafts	0.450	86396010	FT 4	-
2 cloths, flexible shaft grease FT 4, hose brush BW 4/6	BW 4, BW 6	0.770	86396005	P-Set BW 4/6	-
2 cloths, flexible shaft grease FT 4, hose brush BW 7	BW 7	0.770	86396007	P-Set BW 7	-
2 cloths, flexible shaft grease FT 4, hose brush BW 10/12	BW 10, BW 12	0.770	86396006	P-Set BW 10/12	-

Clamping flanges



Clamping flanges

PFERD offers different clamping flanges for tool drives.

Net weight [kg]		Item no.	Designation	Price/unit GBP
0.059	1	90011455	SPF 90011455	-
0.098	1	98960180	SPF 98960180	-
0.051	1	98970043	SPF 98970043	-
0.069	1	90011450	SPM 90011450 M14	-
0.098	1	98960181	SPM 98960181	-
0.066	1	98980036	SPM 98980036 M14	-
0.610	1	98970042	SSM 98970042	-
0.008	1	98980039	DHFL 98980039	-
0.010	1	98980040	DHTR 98980040	-
0.018	1	90011460	DS 90011460	-
0.003	1	98980037	FLS 98980037	-
0.010	1	98980038	FLS-CC 98980038	-

Accessories for tool drives

Frequency damper



Frequency damper

PFERD offers different frequency dampers to make use much easier on the ears.

Net weight [kg]		Item no.	Designation	Price/unit GBP
	1	87200216	FD 47-8-28 ID	-

